

MTRF1 antibody

Catalog Number: 112796

Product name

MTRF1 antibody

Specificity

Human, Mouse; other species not tested.

Antibody description

MTRF1 Rabbit Polyclonal antibody. Positive IHC detected in human pancreas cancer tissue, human liver tissue, human pancreas tissue. Positive WB detected in mouse liver tissue. Observed molecular weight by Western-blot: 52kd

Preparation

This antibody was obtained by immunization of MTRF1 recombinant protein (Accession Number: BC027731). Purification method: Antigen affinity purified.

Formulation

PBS with 0.02% sodium azide and 50% glycerol pH 7.3.

Storage

Store at -20°C. DO NOT ALIQUOT

Clonality

Polyclonal

Ig Type

Rabbit IgG

Applications

ELISA, WB, IHC

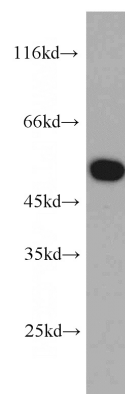
Dilutions

Recommended Dilution:

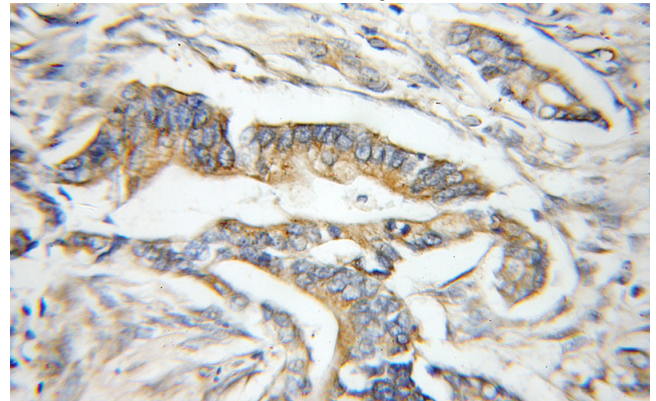
WB: 1:500-1:5000

IHC: 1:20-1:200

Validations



mouse liver tissue were subjected to SDS PAGE followed by western blot with Catalog No:112796(MTRF1 antibody) at dilution of 1:300



Immunohistochemical of paraffin-embedded human pancreas cancer using Catalog No:112796(MTRF1 antibody) at dilution of 1:50 (under 10x lens)