

Phospho-CARM1-S228 pAb



Catalog Number: 166396

Product name

Phospho-CARM1-S228 pAb

Specificity

Human, Mouse, Rat

Antibody description

Polyclonal antibody to Phospho-CARM1-S228

Preparation

Antigen: A phospho specific peptide corresponding to residues surrounding S228 of human CARM1

Formulation

PBS with 0.02% sodium azide, 50% glycerol, pH7.3.

Storage

Store at -20°C. Avoid freeze / thaw cycles.

Clonality

Polyclonal

Ig Type

Rabbit IgG

Applications

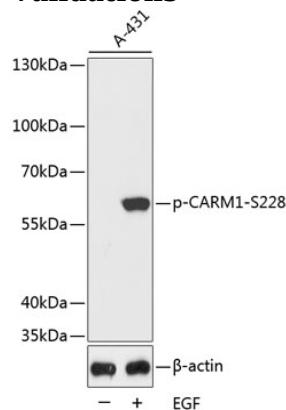
WB, IF

Dilutions

WB 1:500 - 1:2000

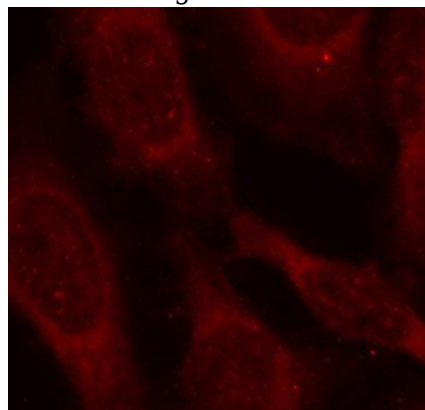
IF 1:100 - 1:200

Validations



Western blot - Phospho-CARM1-S228 pAb

Western blot analysis of extracts from A431 cells using Phospho-CARM1-S228 antibody. Secondary antibody: HRP Goat Anti-Rabbit IgG (H+L) at 1:10000 dilution. Lysates/proteins: 25ug per lane. Blocking buffer: 3% BSA.



Immunofluorescence - Phospho-CARM1-S228 pAb

Immunofluorescence analysis of methanol-fixed HeLa cells using Phospho-CARM1-S228 antibody.