

# PSMD13 antibody



Catalog Number: 114396

## Product name

PSMD13 antibody

## Specificity

Human; other species not tested.

## Antibody description

PSMD13 Rabbit Polyclonal antibody. Positive WB detected in HeLa cells, HepG2 cells, Jurkat cells. Positive IF detected in Hela cells. Observed molecular weight by Western-blot: 43 kDa

## Preparation

This antibody was obtained by immunization of PSMD13 recombinant protein (Accession Number: NM\_002817). Purification method: Antigen affinity purified.

## Formulation

PBS with 0.02% sodium azide and 50% glycerol pH 7.3.

## Storage

Store at -20°C. DO NOT ALIQUOT

## Clonality

Polyclonal

## Ig Type

Rabbit IgG

## Applications

ELISA, IF, WB

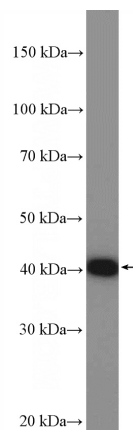
## Dilutions

Recommended Dilution:

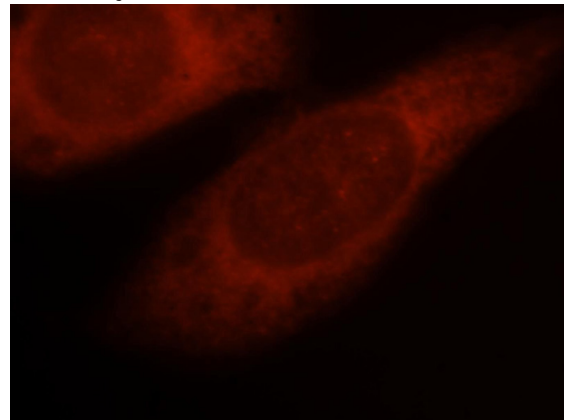
WB: 1:500-1:5000

IF: 1:10-1:100

## Validations



HeLa cells were subjected to SDS PAGE followed by western blot with Catalog No:114396(PSMD13 Antibody) at dilution of 1:1000



Immunofluorescent analysis of Hela cells, using PSMD13 antibody Catalog No:114396 at 1:25 dilution and Rhodamine-labeled goat anti-rabbit IgG (red).