

# Anti-PEDF antibody



Catalog Number: 102396

## Product name

Anti-PEDF antibody

## Immunogen

[Human PEDF \(His Tag\) recombinant protein](#)

## Specificity

Human SerpinF1 / PEDF

## Antibody description

Rabbit polyclonal to PEDF

## Preparation

Produced in rabbits immunized with purified, recombinant Human SerpinF1 (rh SerpinF1; NP\_002606.3; Met 1-Pro 418). SerpinF1 specific IgG was purified by human SerpinF1 affinity chromatography.

## Formulation

0.2 µm filtered solution in PBS with 5% trehalose

## Storage

This antibody can be stored at 2°C-8°C for one month without detectable loss of activity. Antibody products are stable for twelve months from date of receipt when stored at -20°C to -80°C.

Preservative-Free.

Sodium azide is recommended to avoid contamination (final concentration 0.05%-0.1%). It is toxic to cells and should be disposed of properly. Avoid repeated freeze-thaw cycles.

## Clonality

Polyclonal

## Ig Type

Rabbit IgG

## Applications

ELISA, WB, IP

## Dilutions

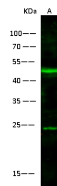
WB: 10-20 µg/mL

ELISA: 0.5-1.0 µg/mL

This antibody can be used at 0.5-1.0 µg/mL with the appropriate secondary reagents to detect Human SERPINF1. The detection limit for Human SERPINF1 is 0.00245 µg/well.

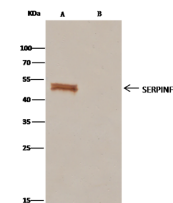
IP: 1-4 µg/mg of lysate

## Validations



Items	Lanes
Sample (whole cell lysate)	A
Sample Volume (µg/lane)	K562
Cell	30
Recommended Concentration	13% SDS-PAGE reducing gel
Secondary Antibody	10-20 µg/ml
Explanation	Dylight 800-labeled Antibody to Rabbit IgG (H+L) at 1:5000 dilution.
Developed using Odyssey imaging system.	
Predicted band size: 46 kDa Observed band size: 46 kDa Additional bands at: 24 kDa (We are unsure as to the identity of these extra bands. They are possible non-specific bindings).	

SerpinF1 / PEDF Antibody, Rabbit PAb, Antigen Affinity Purified, Western blot



Items	Lanes
Sample (whole cell lysate)	A
Sample quantity	B
IP antibody type	SERPINF1-RP02
IP antibody quantity	Rabbit blank IgG
Protein G agarose	2 µg
Cell	15 µl of 50% Protein G Agarose
Primary antibody	13% SDS-PAGE reducing gel
Secondary antibody	SERPINF1-RP02 antibody at 10 µg/ml [Cat# 11104-RP02]
	Clean-Blot® IP Detection Reagent (HRP) at 1:1000 dilution

SerpinF1 / PEDF Antibody, Rabbit PAb, Antigen Affinity Purified