

# HECTD1 antibody

Catalog Number: 111396

## Product name

HECTD1 antibody

IP: 1:200-1:2000

IHC: 1:20-1:200

## Specificity

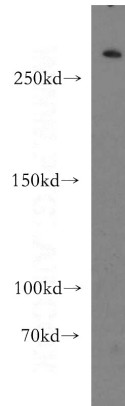
Human, Mouse; other species not tested.

IF: 1:10-1:100

## Antibody description

HECTD1 Rabbit Polyclonal antibody. Positive IF detected in Hela cells. Positive IHC detected in human kidney tissue, human brain tissue. Positive IP detected in mouse brain tissue. Positive WB detected in human brain tissue. Observed molecular weight by Western-blot: 290kd

## Validations



## Preparation

This antibody was obtained by immunization of HECTD1 recombinant protein (Accession Number: BC006237). Purification method: Antigen affinity purified.

human brain tissue were subjected to SDS PAGE followed by western blot with Catalog No:111396(HECTD1 antibody) at dilution of 1:500

## Formulation

PBS with 0.02% sodium azide and 50% glycerol pH 7.3.

## Storage

Store at -20°C. DO NOT ALIQUOT

## Clonality

Polyclonal

## Ig Type

Rabbit IgG

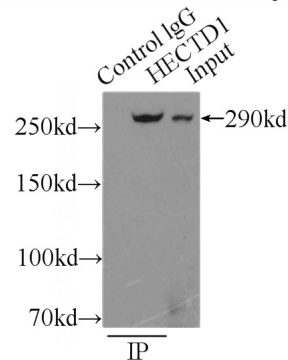
## Applications

ELISA, WB, IHC, IF, IP

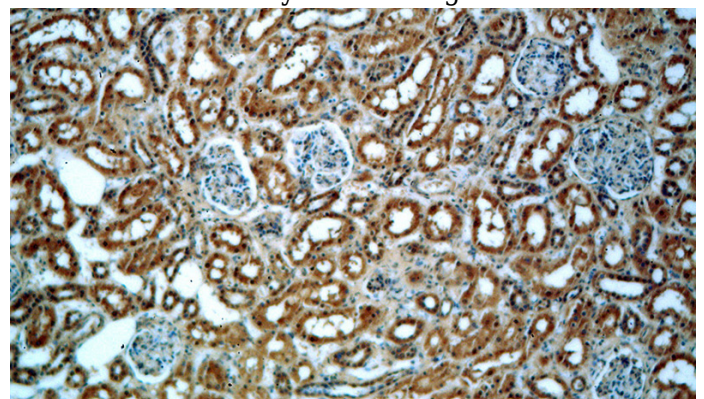
## Dilutions

Recommended Dilution:

WB: 1:500-1:5000



IP Result of anti-HECTD1 (IP:Catalog No:111396, 5ug; Detection:Catalog No:111396 1:500) with mouse brain tissue lysate 8000ug.

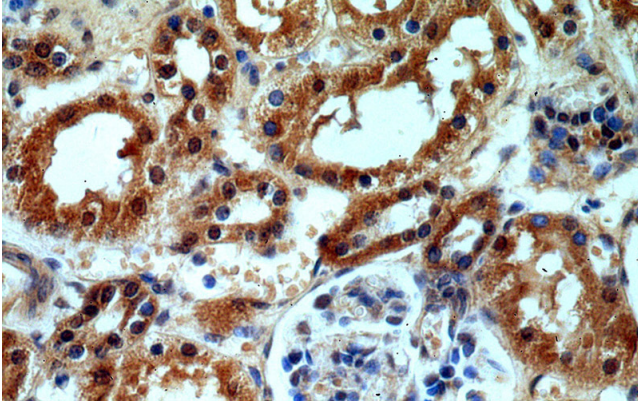


# HECTD1 antibody

Catalog Number: 111396

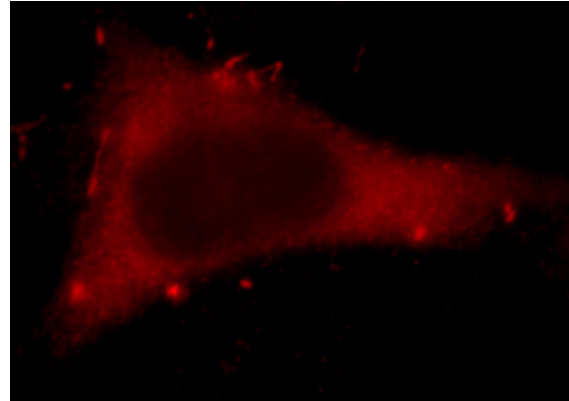
---

Immunohistochemical of paraffin-embedded human kidney using Catalog No:111396(HECTD1 antibody) at dilution of 1:50 (under 10x lens)



Immunohistochemical of paraffin-embedded human kidney using Catalog No:111396(HECTD1

antibody) at dilution of 1:50 (under 40x lens)



Immunofluorescent analysis of Hela cells, using HECTD1 antibody Catalog No:111396 at 1:25 dilution and Rhodamine-labeled goat anti-rabbit IgG (red).