

# Anti-MAL antibody



Catalog Number: 176696

## Product name

WB, IHC-P

Anti-MAL antibody

## Dilutions

## Specificity

IHC-P: 1:100 WB: 1:500

Human, Mouse, Rat

## Antibody description

Rabbit polyclonal antibody to MAL

## Preparation

This antigen of this antibody was synthetic peptide within human mal aa 103-146.

## Formulation

Liquid, 1\*PBS (pH7.4), 0.2% BSA, 40% Glycerol.  
Preservative: 0.05% Sodium Azide.

## Storage

Store at +4°C after thawing. Aliquot store at -20°C or -80°C. Avoid repeated freeze / thaw cycles.

## Clonality

Polyclonal

## Ig Type

Rabbit IgG

## Applications

## Validations

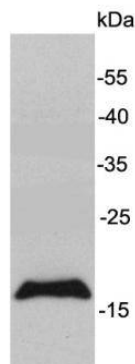


Fig1: Western blot analysis on K562 cell lysates using anti-MAL rabbit polyclonal antibodies.

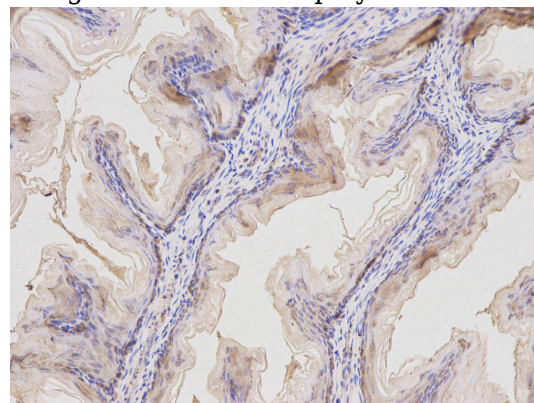


Fig2: Immunohistochemical analysis of paraffin-embedded mouse stomach tissue using anti- MAL rabbit polyclonal antibody.