

HSD11B2 Polyclonal Antibody



Catalog Number: 165696

Product name

HSD11B2 Polyclonal Antibody

Specificity

Human, Rat

Antibody description

Polyclonal antibody to HSD11B2

Preparation

Antigen: Recombinant fusion protein containing a sequence corresponding to amino acids 266-405 of human HSD11B2 (NP_000187.3).

Formulation

PBS with 0.02% sodium azide, 50% glycerol, pH7.3.

Storage

Store at -20°C. Avoid freeze / thaw cycles.

Clonality

Polyclonal

Ig Type

Rabbit IgG

Applications

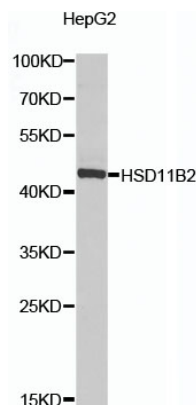
WB, IHC

Dilutions

WB 1:200 - 1:1000

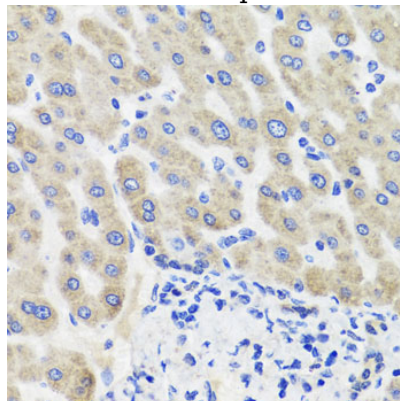
IHC 1:50 - 1:100

Validations



Western blot - HSD11B2 Polyclonal Antibody

Western blot analysis of extracts of HepG2 cells, using HSD11B2 antibody at 1:1000 dilution. Secondary antibody: HRP Goat Anti-Rabbit IgG (H+L) at 1:10000 dilution. Lysates/proteins: 25ug per lane. Blocking buffer: 3% nonfat dry milk in TBST. Detection: ECL Enhanced Kit. Exposure time: 15s.



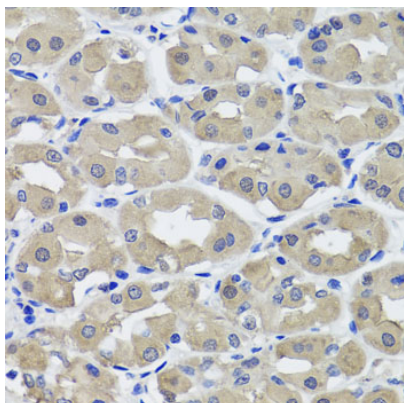
Immunohistochemistry - HSD11B2 Polyclonal Antibody

Immunohistochemistry of paraffin-embedded human liver injury using HSD11B2 antibody at dilution of 1:100 (40x lens).

HSD11B2 Polyclonal Antibody

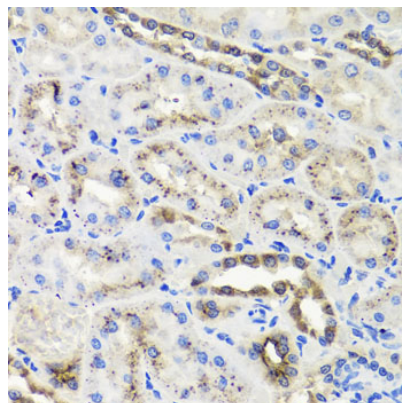


Catalog Number: 165696



Immunohistochemistry - HSD11B2 Polyclonal Antibody

Immunohistochemistry of paraffin-embedded human stomach using HSD11B2 antibody at dilution of 1:100 (40x lens).



Immunohistochemistry - HSD11B2 Polyclonal Antibody

Immunohistochemistry of paraffin-embedded rat kidney using HSD11B2 antibody at dilution of 1:100 (40x lens).