

ribosomal protein L4 antibody



Catalog Number: 114696

Product name

ribosomal protein L4 antibody

Recommended Dilution:

WB: 1:500-1:5000

Specificity

Human, Mouse, Rat; other species not tested.

IP: 1:200-1:2000

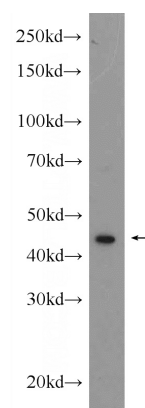
IHC: 1:20-1:200

Antibody description

ribosomal protein L4 Rabbit Polyclonal antibody. Positive IF detected in HepG2 cells. Positive IHC detected in human lymphoma tissue. Positive IP detected in K-562 cells. Positive WB detected in rat brain tissue, A375 cells, HeLa cells, human skeletal muscle tissue, K-562 cells, mouse skeletal muscle tissue, rat skeletal muscle tissue, U-937 cells. Observed molecular weight by Western-blot: 48kd

IF: 1:20-1:200

Validations



Preparation

This antibody was obtained by immunization of ribosomal protein L4 recombinant protein (Accession Number: NM_000968). Purification method: Antigen affinity purified.

rat brain tissue were subjected to SDS PAGE followed by western blot with Catalog No:114696(RPL4 Antibody) at dilution of 1:1000

Formulation

PBS with 0.1% sodium azide and 50% glycerol pH 7.3.

Storage

Store at -20°C. DO NOT ALIQUOT

Clonality

Polyclonal

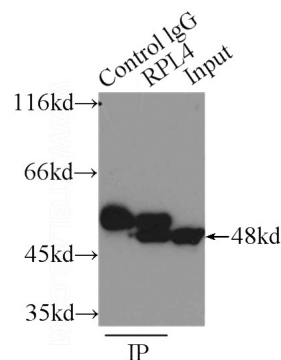
Ig Type

Rabbit IgG

Applications

ELISA, IHC, IF, IP, WB

Dilutions

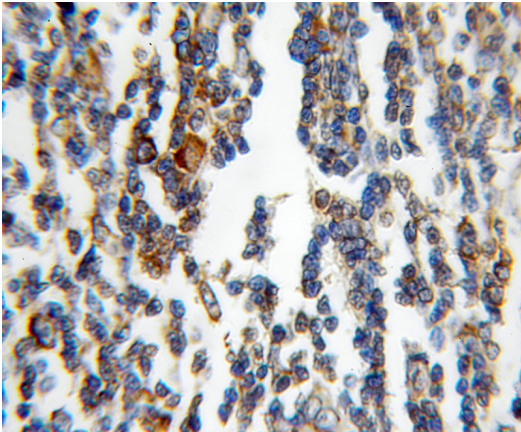


IP Result of anti-RPL4 (IP:Catalog No:114696, 3ug; Detection:Catalog No:114696 1:800) with K-562 cells lysate 6000ug.

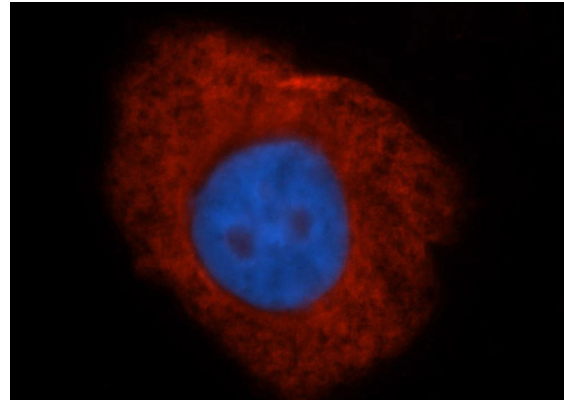
ribosomal protein L4 antibody



Catalog Number: 114696



Immunohistochemical of paraffin-embedded human lymphoma using Catalog No:114696(RPL4 antibody) at dilution of 1:100 (under 10x lens)



Immunofluorescent analysis of HepG2 cells, using RPL4 antibody Catalog No:114696 at 1:50 dilution and Rhodamine-labeled goat anti-rabbit IgG (red). Blue pseudocolor = DAPI (fluorescent DNA dye).