

# MMP1 antibody

Catalog Number: 112696

## Product name

MMP1 antibody

## Specificity

Human, Mouse, Rat; other species not tested.

## Antibody description

MMP1 Rabbit Polyclonal antibody. Positive FC detected in HepG2 cells. Positive IF detected in HepG2 cells. Positive IHC detected in human cervical cancer tissue, rat testis tissue. Positive WB detected in A549 cells, A375 cells, HepG2 cells, Jurkat cells, mouse skeletal muscle tissue, NIH/3T3 cells, rat skin tissue. Positive IP detected in A549 cells. Observed molecular weight by Western-blot: 52-56 kDa, 62 kDa

## Preparation

This antibody was obtained by immunization of MMP1 recombinant protein (Accession Number: NM\_002421). Purification method: Antigen affinity purified.

## Formulation

PBS with 0.1% sodium azide and 50% glycerol pH 7.3.

## Storage

Store at -20°C. DO NOT ALIQUOT

## Clonality

Polyclonal

## Ig Type

Rabbit IgG

## Applications

ELISA, WB, IF, IP, FC, IHC

## Dilutions

Recommended Dilution:

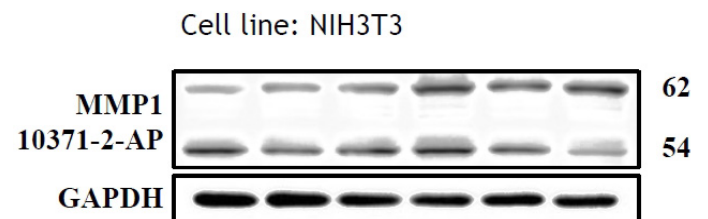
WB: 1:200-1:2000

IP: 1:500-1:5000

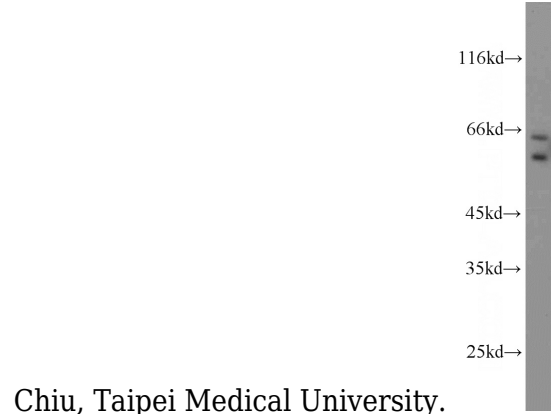
IHC: 1:20-1:200

IF: 1:20-1:200

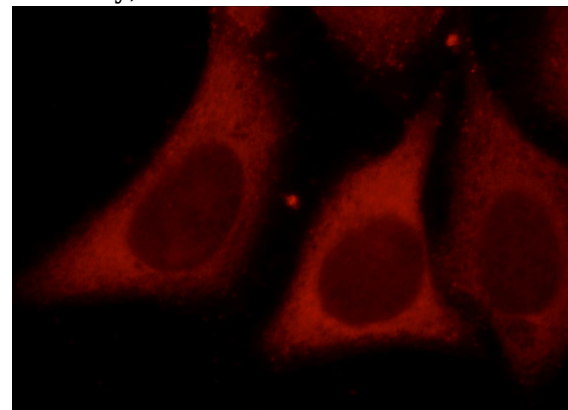
## Validations



WB results of MMP1 antibody (Catalog No., 1:500) with NIH3T3 cells, 62 kDa for pro-MMP1 and 54 kDa for Active MMP1. Data from Dr. Hui-Wen



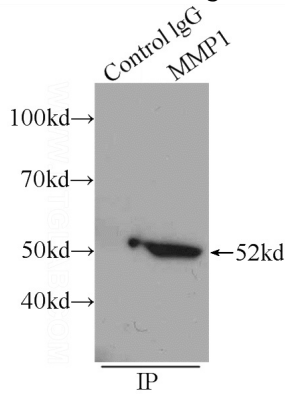
A549 cells were subjected to SDS PAGE followed by western blot with Catalog No:112696(MMP1 antibody) at dilution of 1:1000



# MMP1 antibody

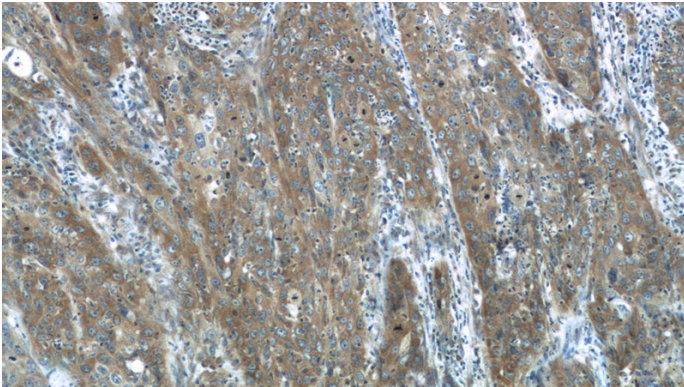
Catalog Number: 112696

Immunofluorescent analysis of HepG2 cells, using MMP1 antibody Catalog No:112696 at 1:50 dilution and Rhodamine-labeled goat anti-rabbit

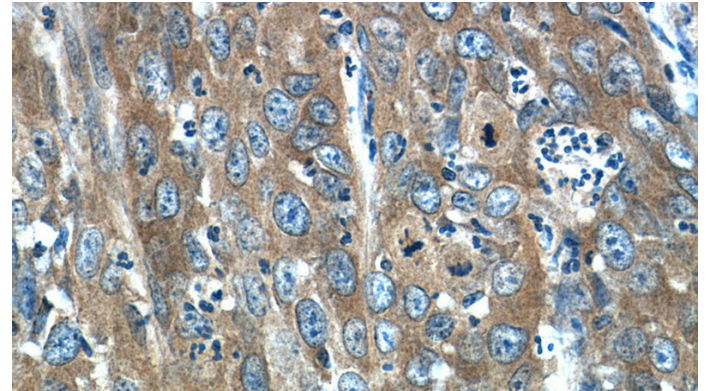


IgG (red).

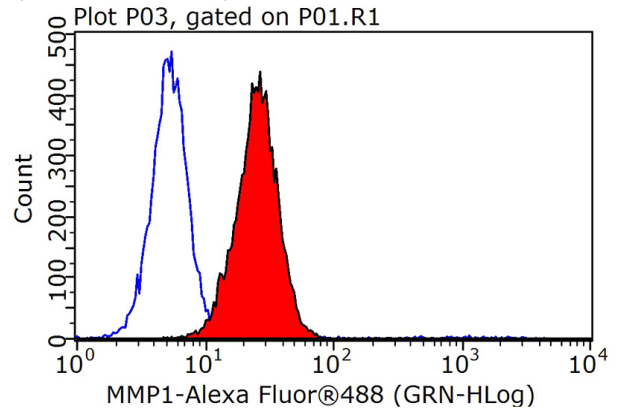
IP Result of anti-MMP1 (IP:Catalog No:112696, 4ug; Detection:Catalog No:112696 1:1000) with A549 cells lysate 1200ug.



Immunohistochemistry of paraffin-embedded human cervical cancer tissue slide using Catalog No:112696(MMP1 Antibody) at dilution of 1:200 (under 10x lens)



Immunohistochemistry of paraffin-embedded human cervical cancer tissue slide using Catalog No:112696(MMP1 Antibody) at dilution of 1:200 (under 40x lens)



$1 \times 10^6$  HepG2 cells were stained with 0.2ug MMP1 antibody (Catalog No:112696, red) and control antibody (blue). Fixed with 90% MeOH blocked with 3% BSA (30 min). Alexa Fluor 488-conjugated AffiniPure Goat Anti-Rabbit IgG(H+L) with dilution 1:1000.