

## General Information

### Gene Name Synonym

Colony-stimulating factor; Molgramostin;  
Sargramostim

### Protein Construction

A DNA sequence encoding human GMCSF  
(NP\_000749.2) (Met1-Glu144) was expressed.

### Organism

Human

### Expression Host

Human Cells

## QC Testing

### Activity

Measured in a cell proliferation assay using TF-1  
human erythroleukemic cells.  
The ED<sub>50</sub> for this effect is typically 0.1-0.6 ng/ml.

### Purity

> 90 % as determined by SDS-PAGE

### Endotoxin

< 1.0 EU per µg of the protein as determined by  
the LAL method

### Stability

Samples are stable for up to twelve months from  
date of receipt at -70°C

### Predicted N terminal

Ala 18

## Molecular Mass

The recombinant human GMCSF consists of 127  
amino acids and predicts a molecular mass of 14.5  
kDa. It migrates as an approximately 23.8 kDa  
band in SDS-PAGE under reducing conditions.

## Formulation

Lyophilized from sterile PBS, pH 7.4.

1. 5 % trehalose and mannitol are added as  
protectants before lyophilization.

2. Please contact us for any concerns or special  
requirements.

## Usage Guide

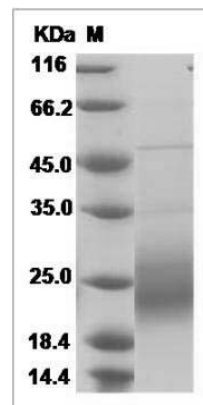
### Storage

Store it under sterile conditions at -20°C to -80°C.  
It is recommended that the protein be aliquoted  
for optimal storage. Avoid repeated freeze-thaw  
cycles.

### Reconstitution

Adding sterile water, prepare a stock solution of  
0.25 mg/ml. Concentration is measured by UV-Vis.

## SDS-PAGE



Human GM-CSF / CSF2 Protein SDS-PAGE