

# Anti-RASL10A antibody



Catalog Number: 176296

## Product name

Polyclonal

Anti-RASL10A antibody

## Ig Type

Rabbit IgG

## Specificity

Human, Mouse

## Applications

WB

## Antibody description

Rabbit polyclonal antibody to RASL10A

## Dilutions

WB: 1:500-1:2000

## Preparation

This antigen of this antibody was the antiserum was produced against synthesized peptide derived from human rasl10a. aa range:107-156

## Validations

## Formulation

Liquid, Liquid in PBS containing 50% glycerol, 0.5% BSA and 0.02% sodium azide.

## Storage

Store at +4°C after thawing. Aliquot store at -20°C or -80°C. Avoid repeated freeze / thaw cycles.

## Clonality

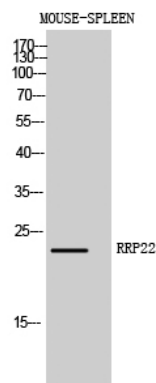


Fig1:: Western Blot analysis of MOUSE-SPLEEN cells using RRP22 Polyclonal Antibody diluted at 1: 1000