

Anti-NOD2 antibody



Catalog Number: 175296

Product name

Anti-NOD2 antibody

Specificity

Human, Mouse, Rat, Dog, Pig, Cow, Horse, Rabbit

Antibody description

Rabbit polyclonal antibody to NOD2

Preparation

This antigen of this antibody was klh conjugated synthetic peptide derived from human card15 251-350/1040

Formulation

Liquid, 0.01M TBS(pH7.4) with 1% BSA, 0.03% Proclin300 and 50% Glycerol.

Storage

Store at -20°C for one year. Avoid repeated freeze/thaw cycles. The lyophilized antibody is stable at room temperature for at least one month and for greater than a year when kept at -20°C. When reconstituted in sterile pH 7.4 0.01M PBS or diluent of antibody the antibody is stable for at least two weeks at 2-4°C.

Clonality

Polyclonal

Ig Type

Rabbit IgG

Applications

WB, FC

Dilutions

WB:1:500-2000

FC:1ug/Test

Validations

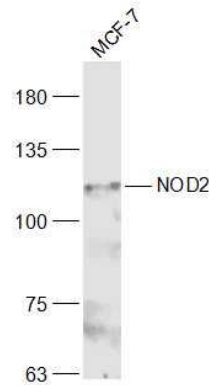
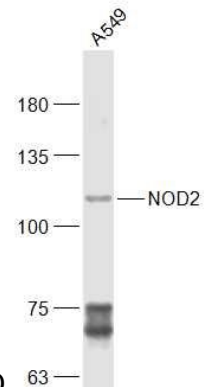
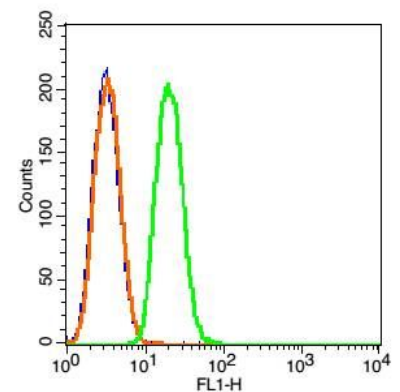


Fig1: Sample:; MCF-7(Human) Cell Lysate at 30 ug; Primary: Anti-NOD2 at 1/300 dilution; Secondary: IRDye800CW Goat Anti-Rabbit IgG at 1/20000 dilution; Predicted band size: 114 kD;



Observed band size: 114 kD

Fig2: Sample:; A549(Human) Cell Lysate at 30 ug; MCF-7(Human) Cell Lysate at 30 ug; Primary: Anti-NOD2 at 1/300 dilution; Secondary: IRDye800CW Goat Anti-Rabbit IgG at 1/20000 dilution; Predicted band size: 114 kD; Observed



band size: 114 kD

Fig3: Blank control(blue): Raji(fixed with 2% paraformaldehyde (10 min)).; Primary

Anti-NOD2 antibody



Catalog Number: 175296

Antibody: Rabbit Anti-CARD15/AF488 Conjugated antibody(175296#-/AF488), Dilution: 1 μ g in 100 μ L 1X PBS containing 0.5% BSA;; Isotype Control

Antibody: Rabbit IgG/AF488(orange) ,used under the same conditions);