

# AMMECR1 antibody



Catalog Number: 107996

## Product name

AMMECR1 antibody

## Specificity

Human, Mouse; other species not tested.

## Antibody description

AMMECR1 Rabbit Polyclonal antibody. Positive WB detected in Jurkat cells, mouse liver tissue, mouse uterus tissue. Positive IHC detected in human cerebellum tissue. Observed molecular weight by Western-blot: 45 kDa

## Preparation

This antibody was obtained by immunization of AMMECR1 recombinant protein (Accession Number: NM\_001025580). Purification method: Antigen affinity purified.

## Formulation

PBS with 0.1% sodium azide and 50% glycerol pH 7.3.

## Storage

Store at -20°C. DO NOT ALIQUOT

## Clonality

Polyclonal

## Ig Type

Rabbit IgG

## Applications

ELISA, WB, IHC

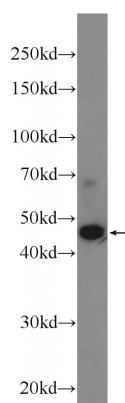
## Dilutions

Recommended Dilution:

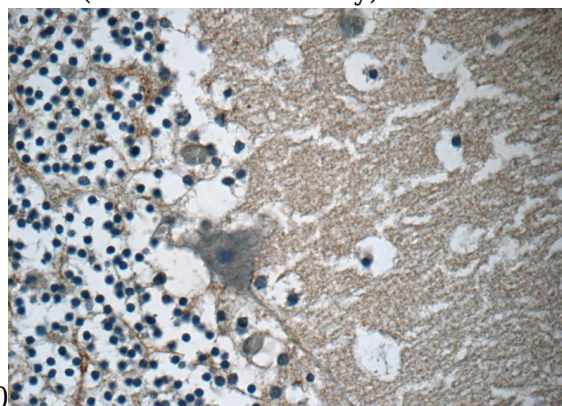
WB: 1:200-1:2000

IHC: 1:20-1:200

## Validations



Jurkat cells were subjected to SDS PAGE followed by western blot with Catalog No:107996(AMMECR1 Antibody) at dilution of



Immunohistochemistry of paraffin-embedded human cerebellum tissue slide using Catalog No:107996(AMMECR1 Antibody) at dilution of 1:50 (under 40x lens)