

Anti-Fgf8 antibody



Catalog Number: 105196

Product name

Anti-Fgf8 antibody

Specificity

Human FGF-8(IsoformFGF-8E)

Antibody description

Rabbit polyclonal to Fgf8

Preparation

Produced in rabbits immunized with a synthetic peptide corresponding to the C-terminus of the human FGF-8(IsoformFGF-8E), and purified by antigen affinity chromatography.

Formulation

0.2 µm filtered solution in PBS

Storage

This antibody can be stored at 2°C-8°C for one month without detectable loss of activity. Antibody products are stable for twelve months from date of receipt when stored at -20°C to -80°C.

Preservative-Free.

Sodium azide is recommended to avoid contamination (final concentration 0.05%-0.1%). It is toxic to cells and should be disposed of

properly. Avoid repeated freeze-thaw cycles.

Clonality

Polyclonal

Ig Type

Rabbit IgG

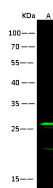
Applications

WB

Dilutions

WB: 10-20 µg/ml

Validations



Items	Lanes	A
Sample (whole cell lysate)		Jurkat
Sample Volume (µg/lane)		30
Gel		13%SDS-PAGE reducing gel
Recommended Concentration		10-20µg/ml
Secondary Antibody		Dylight 800 labeled Antibody to Rabbit IgG (1:1), at 1:5000 dilution.
Developed using Odyssey imaging system.		
Explanation		Predicted band size : 27 kDa Observed band size : 27 kDa Additional bands at : 20 kDa(We are unsure as to the identity of these extra bands. They are possible non-specific bindings).

FGF-8(IsoformFGF-8E) Antibody, Rabbit PAb, Antigen Affinity Purified, Western blot