

Human 14-3-3 epsilon/YWHAE (GST Tag) recombinant protein



Catalog Number: 503196

General Information

Protein Construction

A DNA sequence encoding the human YWHAE (NP_006752.1) (Met 1-Gln 255) was fused with the GST tag at the N-terminus.

Organism

Human

Expression Host

E. coli

QC Testing

Purity

> 92 % as determined by SDS-PAGE

Endotoxin

Please contact us for more information.

Stability

Samples are stable for up to twelve months from date of receipt at -70°C

Predicted N terminal

Met

Molecular Mass

The recombinant human YWHAE/GST chimera consists of 487 amino acids and has a predicted molecular mass of 56 kDa. It migrates as an approximately 50 kDa band in SDS-PAGE under

reducing conditions.

Formulation

Lyophilized from sterile 20mM Tris, 150mM NaCl, 0.25mM DTT, 25% glycerol, 0.5mM GSH, pH 7.5
1. 5 % trehalose and mannitol are added as protectants before lyophilization.

2. Please contact us for any concerns or special requirements.

Usage Guide

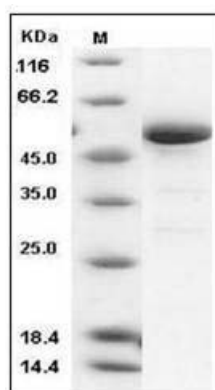
Storage

Store it under sterile conditions at -20°C to -80°C. It is recommended that the protein be aliquoted for optimal storage. Avoid repeated freeze-thaw cycles.

Reconstitution

Adding sterile water, prepare a stock solution of 0.25 mg/ml. Concentration is measured by UV-Vis.

SDS-PAGE



Human 14-3-3 epsilon / YWHAE Protein (GST Tag)
SDS-PAGE