

LEO1 antibody

Catalog Number: 112196

Product name

LEO1 antibody

WB: 1:500-1:5000

IHC: 1:20-1:200

Specificity

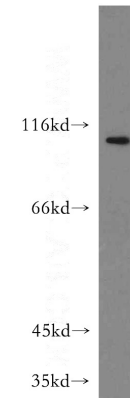
Human, Mouse, Rat; other species not tested.

IF: 1:10-1:100

Validations

Antibody description

LEO1 Rabbit Polyclonal antibody. Positive WB detected in mouse heart tissue, HeLa cells, HL-60 cells, human placenta tissue, Jurkat cells, mouse brain tissue, mouse skeletal muscle tissue. Positive IF detected in HeLa cells. Positive IHC detected in human colon tissue. Observed molecular weight by Western-blot: 105kd



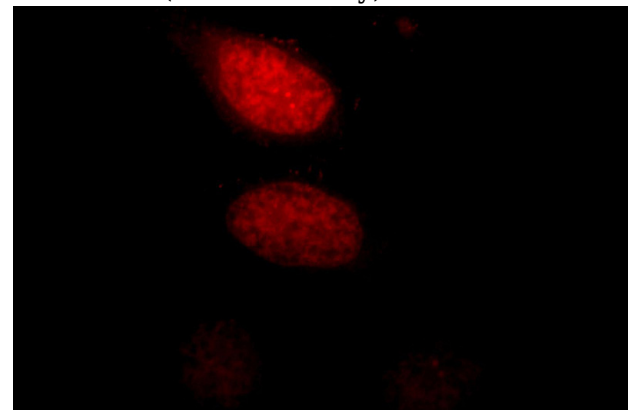
Preparation

This antibody was obtained by immunization of LEO1 recombinant protein (Accession Number: NM_138792). Purification method: Antigen affinity purified.

mouse heart tissue were subjected to SDS PAGE followed by western blot with Catalog No:112196(LEO1 antibody) at dilution of 1:500

Formulation

PBS with 0.02% sodium azide and 50% glycerol pH 7.3.



Storage

Store at -20°C. DO NOT ALIQUOT

Clonality

Polyclonal

Immunofluorescent analysis of HeLa cells, using LEO1 antibody Catalog No:112196 at 1:25 dilution and Rhodamine-labeled goat anti-rabbit IgG (red).

Ig Type

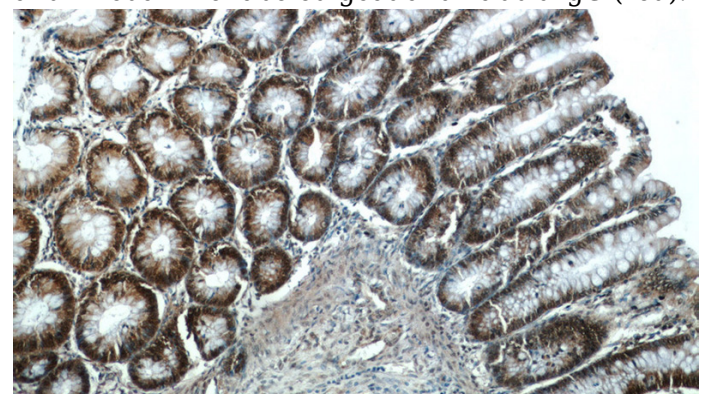
Rabbit IgG

Applications

ELISA, WB, IF, IHC

Dilutions

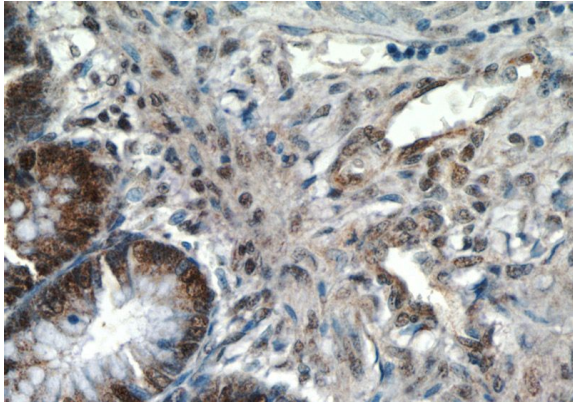
Recommended Dilution:



LEO1 antibody

Catalog Number: 112196

Immunohistochemistry of paraffin-embedded human colon tissue slide using Catalog No:112196(LEO1 Antibody) at dilution of 1:50 (under 10x lens)



Immunohistochemistry of paraffin-embedded human colon tissue slide using Catalog No:112196(LEO1 Antibody) at dilution of 1:50 (under 40x lens)