

# SLC19A1 Polyclonal Antibody



Catalog Number: 162196

## Product name

SLC19A1 Polyclonal Antibody

## Specificity

Human, Mouse, Rat

## Antibody description

Polyclonal antibody to SLC19A1

## Preparation

Antigen: Recombinant fusion protein containing a sequence corresponding to amino acids 452-591 of human SLC19A1 (NP\_919231.1).

## Formulation

PBS with 0.02% sodium azide, 50% glycerol, pH7.3.

## Storage

Store at -20°C. Avoid freeze / thaw cycles.

## Clonality

Polyclonal

## Ig Type

Rabbit IgG

## Applications

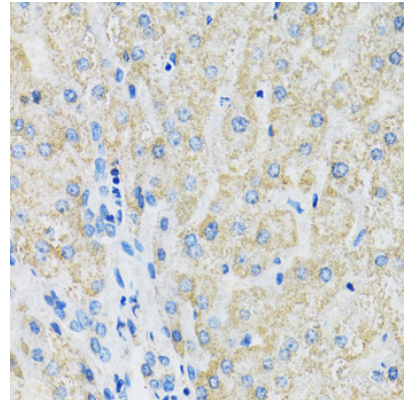
WB, IHC

## Dilutions

WB 1:500 - 1:2000

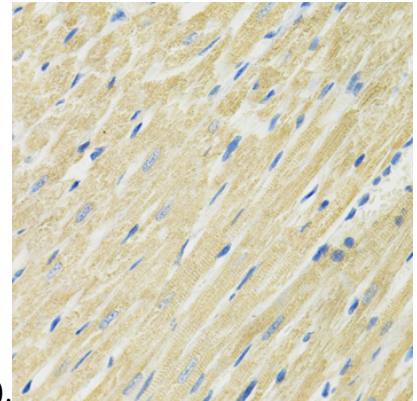
IHC 1:50 - 1:200

## Validations



Immunohistochemistry - SLC19A1 Polyclonal Antibody

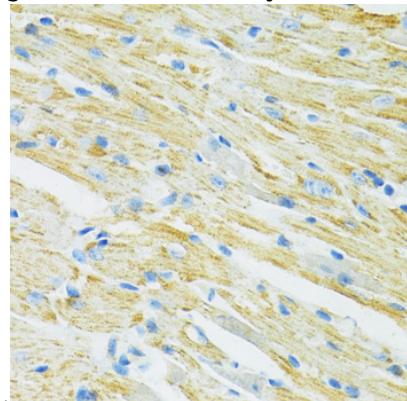
Immunohistochemistry of paraffin-embedded human liver using SLC19A1 antibody at dilution of



1:100 (40x lens).

Immunohistochemistry - SLC19A1 Polyclonal Antibody

Immunohistochemistry of paraffin-embedded rat heart using SLC19A1 antibody at dilution of 1:100



(40x lens).

Immunohistochemistry - SLC19A1 Polyclonal Antibody

# SLC19A1 Polyclonal Antibody



Catalog Number: 162196

---

Immunohistochemistry of paraffin-embedded

mouse heart using SLC19A1 antibody at dilution of 1:100 (40x lens).