

# Anti-Bonzo/CXCR6 antibody



Catalog Number: 100196

## Product name

Anti-Bonzo/CXCR6 antibody

## Specificity

Human CXCR6

## Antibody description

Rabbit polyclonal to Bonzo/CXCR6

## Preparation

Produced in rabbits immunized with a synthetic peptide corresponding to the center region of the Human CXCR6, and purified by antigen affinity chromatography.

## Formulation

0.2 µm filtered solution in PBS

## Storage

This antibody can be stored at 2°C-8°C for one month without detectable loss of activity. Antibody products are stable for twelve months from date of receipt when stored at -20°C to -80°C.

Preservative-Free.

Sodium azide is recommended to avoid contamination (final concentration 0.05%-0.1%). It is toxic to cells and should be disposed of properly. Avoid repeated freeze-thaw cycles.

## Clonality

Polyclonal

## Ig Type

Rabbit IgG

## Applications

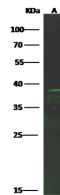
WB, IP

## Dilutions

WB: 10-20 µg/ml

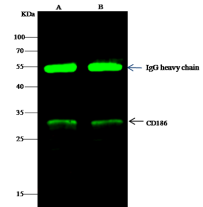
IP: 1-4 µg/mg of lysate

## Validations



| Lanes                      | A  |
|----------------------------|--|
| Items                      |  |
| Sample (whole cell lysate) | HEK293   |
| Sample Volume (µg/lane)    | 30   |
| Gel                        | 13% SDS-PAGE reducing gel  |
| Recommended Concentration  | 10-20 µg/ml  |
| Secondary Antibody         | Dylight 800 labeled Antibody to Rabbit IgG (H+L), at 1:5000 dilution.<br>Developed using Odyssey imaging system. |
| Explanation                | Predicted band size : 39 kDa<br>Observed band size : 39 kDa  |

## CXCR6 Antibody, Rabbit PAb, Antigen Affinity



| Lanes                          | A  | B      |
|--------------------------------|--|--------|
| Items                          |  |        |
| Sample (whole cell lysate)     | 293T   | Jurkat |
| Sample quantity                | 0.5 mg   |        |
| IP antibody quantity           | 4 µg   |        |
| Immunomagnetic beads Protein G | 60 µg  |        |
| Gel                            | 13% SDS-PAGE reducing gel  |        |
| Primary antibody               | KJ11-SMCC-SINOMA12 antibody at 10 µg/ml                              |        |
| Secondary antibody             | Dylight 800 labeled antibody to rabbit IgG (H+L), at 1:5000 dilution |        |

Purified, Western blot

## CXCR6 Antibody, Rabbit PAb, Antigen Affinity

Purified, Immunoprecipitation