

# GBX2 antibody

Catalog Number: 110896

## Product name

GBX2 antibody

## Immunogen

[Human GBX2 Recombinant protein \(GST tag\)](#)

## Specificity

Human, Mouse; other species not tested.

## Antibody description

GBX2 Rabbit Polyclonal antibody. Positive WB detected in HeLa cells, mouse stomach tissue. Positive IP detected in HeLa cells. Positive IF detected in HeLa cells. Observed molecular weight by Western-blot: 33-37 kDa

## Preparation

This antibody was obtained by immunization of GBX2 recombinant protein (Accession Number: XM\_047443907). Purification method: Antigen affinity purified.

## Formulation

PBS with 0.1% sodium azide and 50% glycerol pH 7.3.

## Storage

Store at -20°C. DO NOT ALIQUOT

## Clonality

Polyclonal

## Ig Type

Rabbit IgG

## Applications

ELISA, IP, WB, IF

## Dilutions

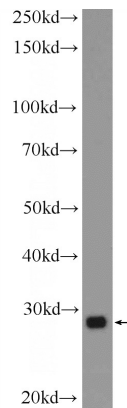
Recommended Dilution:

WB: 1:200-1:1000

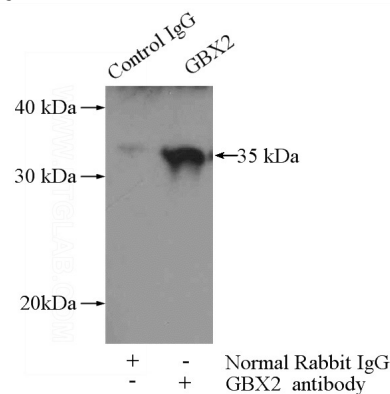
IP: 1:200-1:1000

IF: 1:50-1:500

## Validations



HeLa cells were subjected to SDS PAGE followed by western blot with Catalog No:110896(GBX2 Antibody) at dilution of 1:300



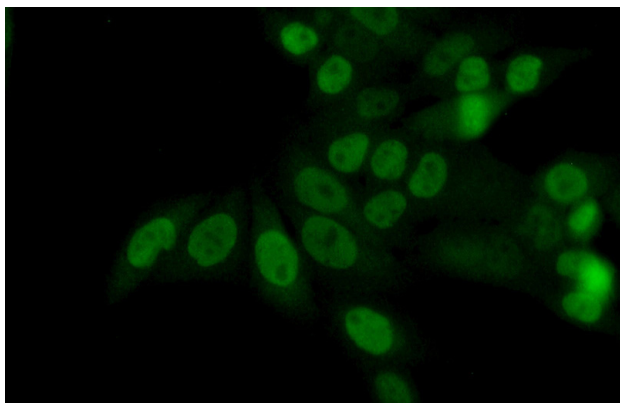
IP Result of anti-GBX2 (IP:Catalog No:110896, 4ug; Detection:Catalog No:110896 1:300) with HeLa cells lysate 3000ug.

# GBX2 antibody



Catalog Number: 110896

---



Immunofluorescent analysis of (10% Formaldehyde) fixed HeLa cells using Catalog No:110896(GBX2 Antibody) at dilution of 1:50 and Alexa Fluor 488-conjugated AffiniPure Goat Anti-Rabbit IgG(H+L)