

# Human c-Abl / ABL1 (GST Tag) recombinant protein



Catalog Number: 500496

## General Information

### Gene Name Synonym

Abelson murine leukemia viral oncogene homolog 1; Abelson tyrosine-protein kinase 1; Proto-oncogene c-Abl; p150

### Protein Construction

A DNA sequence encoding the amino acid sequence (Pro 137-Ser 554) of human ABL1 isoform B (NP\_009297.2) was fused with the GST tag at the N-terminus.

### Organism

Human

### Expression Host

Baculovirus-Insect Cells

## QC Testing

### Activity

The specific activity was determined to be 240 nmol/min/mg using synthetic Abl peptide (EAIYAAPFAKKK) as substrate.

### Purity

> 92 % as determined by SDS-PAGE

### Endotoxin

< 1.0 EU per µg of the protein as determined by the LAL method

### Stability

Samples are stable for up to twelve months from date of receipt at -70°C

### Predicted N terminal

Met

## Molecular Mass

The recombinant human ABL1/GST chimera consists of 645 amino acids and predicts a molecular mass of 74 kDa. It migrates as an approximately 65 kDa band in SDS-PAGE under reducing conditions.

## Formulation

Supplied as sterile 50mM Tris, 100mM NaCl, 0.5mM PMSF, 0.5mM EDTA, 0.5mM Reduced Glutathione, pH 8.0

1. 5 % trehalose and mannitol are added as protectants before lyophilization.
2. Please contact us for any concerns or special requirements.

## Usage Guide

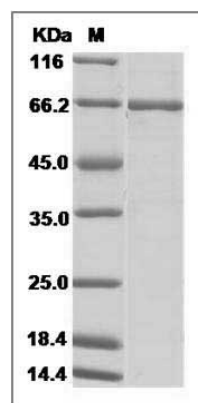
### Storage

Store it under sterile conditions at -20°C to -80°C. It is recommended that the protein be aliquoted for optimal storage. Avoid repeated freeze-thaw cycles.

### Reconstitution

Adding sterile water, prepare a stock solution of 0.25 mg/ml. Concentration is measured by UV-Vis.

## SDS-PAGE



Human ABL1 / JTK7 / p150 Protein (GST Tag)  
SDS-PAGE