

KLHL2 antibody



Catalog Number: 112096

Product name

KLHL2 antibody

Specificity

Human, Mouse, Rat; other species not tested.

Antibody description

KLHL2 Rabbit Polyclonal antibody. Positive IF detected in MCF-7 cells. Positive WB detected in MCF7 cells, human brain tissue. Observed molecular weight by Western-blot: 66 kDa

Preparation

This antibody was obtained by immunization of KLHL2 recombinant protein (Accession Number: NM_007246). Purification method: Antigen affinity purified.

Formulation

PBS with 0.02% sodium azide and 50% glycerol pH 7.3.

Storage

Store at -20°C. DO NOT ALIQUOT

Clonality

Polyclonal

Ig Type

Rabbit IgG

Applications

ELISA, WB, IF

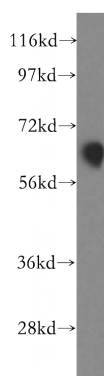
Dilutions

Recommended Dilution:

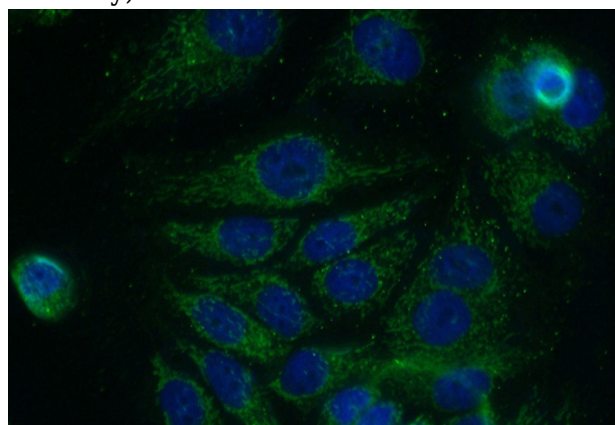
WB: 1:500-1:5000

IF: 1:20-1:200

Validations



MCF7 cells were subjected to SDS PAGE followed by western blot with Catalog No:112096(KLHL2 antibody) at dilution of 1:500



Immunofluorescent analysis of MCF-7 cells using Catalog No:112096(KLHL2 Antibody) at dilution of 1:50 and Alexa Fluor 488-conjugated AffiniPure Goat Anti-Rabbit IgG(H+L)