

## General Information

### Protein Construction

A DNA sequence encoding the human PKC $\zeta$  (NP\_002731.4) (Met 10-Val 596) was fused with the GST tag at the C-terminus.

### Organism

Human

### Expression Host

Baculovirus-Insect Cells

### QC Testing

#### Activity

Kinase activity untested

#### Purity

> 88 % as determined by SDS-PAGE

#### Endotoxin

< 1.0 EU per  $\mu$ g of the protein as determined by the LAL method

#### Stability

Samples are stable for up to twelve months from date of receipt at -70°C

#### Predicted N terminal

Met

#### Molecular Mass

The recombinant human PKC $\zeta$ /GST chimera

consists of 812 amino acids and has a predicted a molecular mass of 93.5 kDa. It migrates as an approximately 100 kDa band in SDS-PAGE under reducing conditions.

### Formulation

Supplied as sterile 50mM Tris, 100mM NaCl, 0.5mM GSH, 0.5mM PMSF, 10% glycerol, pH 7.4  
1. 5 % trehalose and mannitol are added as protectants before lyophilization.  
2. Please contact us for any concerns or special requirements.

### Usage Guide

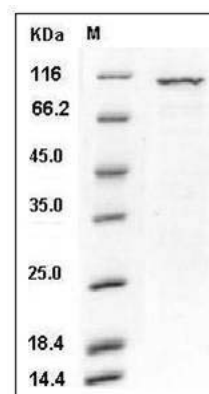
#### Storage

Store it under sterile conditions at -20°C to -80°C. It is recommended that the protein be aliquoted for optimal storage. Avoid repeated freeze-thaw cycles.

#### Reconstitution

Adding sterile water, prepare a stock solution of 0.25 mg/ml. Concentration is measured by UV-Vis.

#### SDS-PAGE



Human PKC iota / PRKCI Protein (GST Tag) SDS-PAGE