

GMDS antibody

Catalog Number: 111096

Product name

GMDS antibody

Specificity

Human, Mouse, Rat; other species not tested.

Antibody description

GMDS Rabbit Polyclonal antibody. Positive WB detected in HeLa cells, rat spleen tissue. Positive IHC detected in human lymphoma tissue. Observed molecular weight by Western-blot: 40-42 kDa

Preparation

This antibody was obtained by immunization of GMDS recombinant protein (Accession Number: NM_001500). Purification method: Antigen affinity purified.

Formulation

PBS with 0.02% sodium azide and 50% glycerol pH 7.3.

Storage

Store at -20°C. DO NOT ALIQUOT

Clonality

Polyclonal

Ig Type

Rabbit IgG

Applications

ELISA, WB, IHC

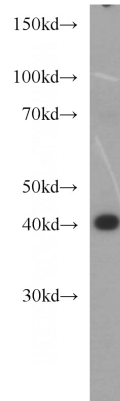
Dilutions

Recommended Dilution:

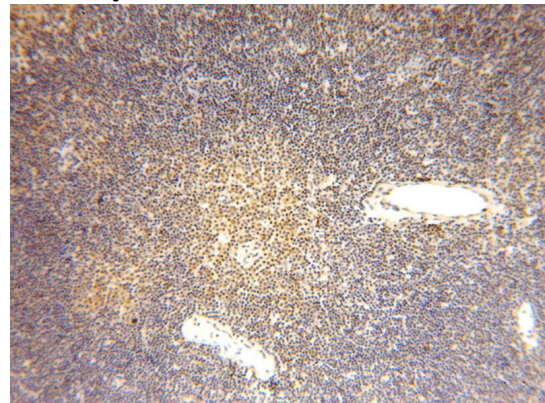
WB: 1:500-1:5000

IHC: 1:20-1:200

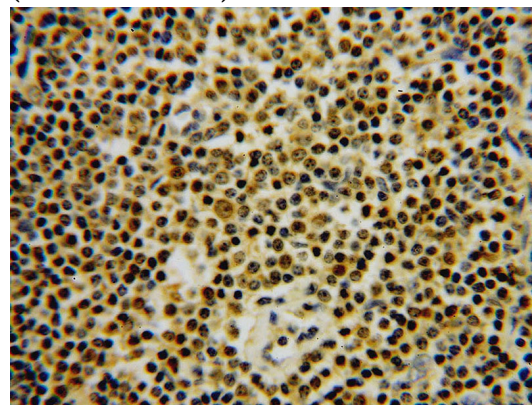
Validations



HeLa cells were subjected to SDS PAGE followed by western blot with Catalog No:111096(GMDS antibody) at dilution of 1:1000



Immunohistochemical of paraffin-embedded human lymphoma using Catalog No:111096(GMDS antibody) at dilution of 1:50 (under 10x lens)



Immunohistochemical of paraffin-embedded human lymphoma using Catalog

GMDS antibody



Catalog Number: 111096

No:111096(GMDS antibody) at dilution of 1:50 (under 40x lens)