

Cytoglobin antibody



Catalog Number: 109786

Product name

Cytoglobin antibody

Specificity

Human, Mouse, Rat; other species not tested.

Antibody description

Cytoglobin Rabbit Polyclonal antibody. Positive IHC detected in human liver cancer tissue, human heart tissue, human liver tissue, human prostate cancer tissue, human stomach tissue. Positive WB detected in mouse heart tissue, human heart tissue, human uterus tissue, mouse brain tissue, mouse kidney tissue, mouse lung tissue, mouse small intestine tissue, mouse spleen tissue, mouse stomach tissue, PC-3 cells, rat kidney tissue, Transfected HEK-293 cells. Observed molecular weight by Western-blot: 21-29 kDa

Preparation

This antibody was obtained by immunization of Cytoglobin recombinant protein (Accession Number: NM_134268). Purification method: Antigen affinity purified.

Formulation

PBS with 0.02% sodium azide and 50% glycerol pH 7.3.

Storage

Store at -20°C. DO NOT ALIQUOT

Clonality

Polyclonal

Ig Type

Rabbit IgG

Applications

ELISA, IHC, WB

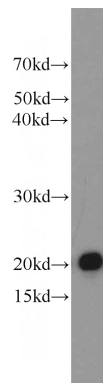
Dilutions

Recommended Dilution:

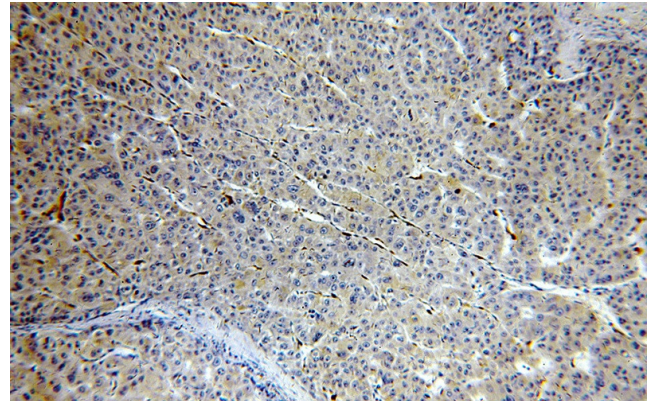
WB: 1:500-1:5000

IHC: 1:20-1:200

Validations



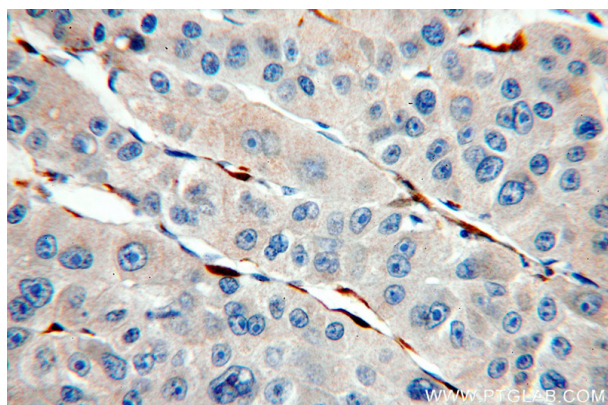
mouse heart tissue were subjected to SDS PAGE followed by western blot with Catalog No:109786(CYGB antibody) at dilution of 1:1500



Immunohistochemical of paraffin-embedded human liver cancer using Catalog No:109786(CYGB antibody) at dilution of 1:100 (under 10x lens)

Cytoglobin antibody

Catalog Number: 109786



Immunohistochemical of paraffin-embedded human liver cancer using Catalog No:109786(CYGB antibody) at dilution of 1:100 (under 40x lens)