

# Anti-Protein CASP Rabbit antibody



Catalog Number: 167786

## Product name

Anti-Protein CASP Rabbit antibody

## Specificity

Human, Mouse, Rat

## Antibody description

Protein CASP Rabbit monoclonal antibody

## Preparation

Antigen: Recombinant protein of human Protein CASP

## Formulation

50nM Tris-Glycine(pH 7.4), 0.15M NaCl, 40%Glycerol, 0.01% sodium azide and 0.05% BSA

## Storage

Store at 4°C short term. Store at -20°C long term. Avoid freeze / thaw cycle.

## Clonality

Monoclonal

## Ig Type

Rabbit IgG

## Applications

WB, ICC/IF, FC, IP

## Dilutions

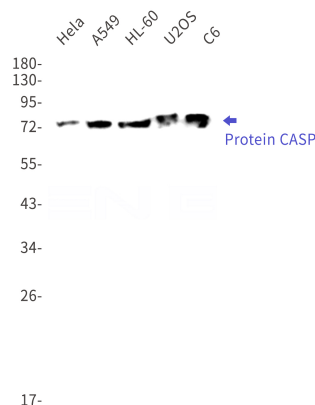
WB: 1/1000

ICC/IF: 1/20

FC: 1/20

IP: 1/20

## Validations



Western blot detection of Protein CASP in HeLa, A549, HL-60, U2OS, C6 cell lysates using Protein CASP Rabbit mAb(1:1000 diluted). Predicted band size: 78kDa. Observed band size: 78kDa.