

SYNM antibody

Catalog Number: 115786

Product name

SYNM antibody

IHC: 1:20-1:200

IF: 1:10-1:100

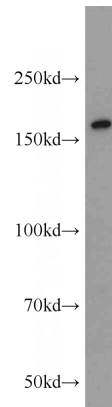
Specificity

Human; other species not tested.

Validations

Antibody description

SYNM Rabbit Polyclonal antibody. Positive IF detected in HeLa cells. Positive IHC detected in human skeletal muscle tissue, human bladder tissue, human heart tissue. Positive WB detected in Y79 cells, human skeletal muscle tissue, Jurkat cells. Observed molecular weight by Western-blot: 170-180kd



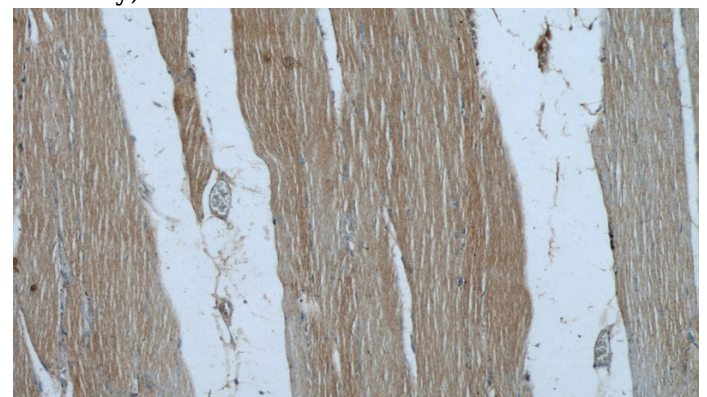
Preparation

This antibody was obtained by immunization of Peptide (Accession Number: NM_015286). Purification method: Antigen affinity purified.

Y79 cells were subjected to SDS PAGE followed by western blot with Catalog No:115786(SYNM antibody) at dilution of 1:1000

Formulation

PBS with 0.02% sodium azide and 50% glycerol pH 7.3.



Storage

Store at -20°C. DO NOT ALIQUOT

Clonality

Polyclonal

Immunohistochemical of paraffin-embedded human skeletal muscle using Catalog No:115786(SYNM antibody) at dilution of 1:50 (under 10x lens)

Ig Type

Rabbit IgG

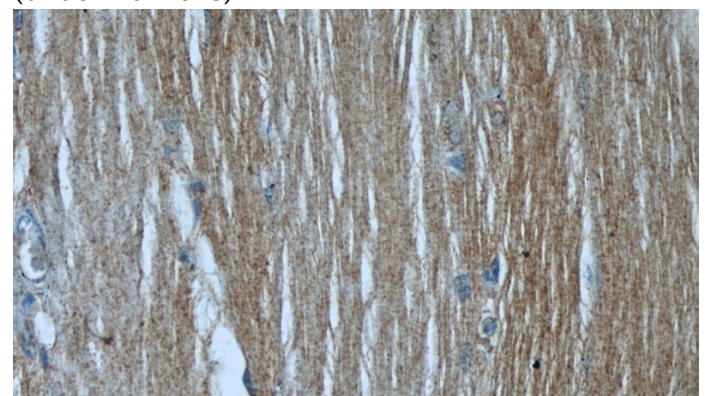
Applications

ELISA, WB, IHC, IF

Dilutions

Recommended Dilution:

WB: 1:500-1:5000



Immunohistochemical of paraffin-embedded

SYNM antibody



Catalog Number: 115786

human skeletal muscle using Catalog No:115786(SYNM antibody) at dilution of 1:50 (under 40x lens)



Immunofluorescent analysis of HeLa cells using Catalog No:115786(SYNM Antibody) at dilution of 1:25 and Rhodamine-Goat anti-Rabbit IgG