

# IMPDH2 antibody

Catalog Number: 111786

## Product name

IMPDH2 antibody

## Specificity

Human, Mouse, Rat; other species not tested.

## Antibody description

IMPDH2 Rabbit Polyclonal antibody. Positive WB detected in human heart tissue, A549 cells, human brain tissue, K-562 cells, mouse heart tissue, mouse lung tissue, rat heart tissue. Positive IP detected in K-562 cells. Positive IF detected in Hela cells. Positive IHC detected in human lung cancer tissue. Observed molecular weight by Western-blot: 56kd

## Preparation

This antibody was obtained by immunization of IMPDH2 recombinant protein (Accession Number: NM\_000884). Purification method: Antigen affinity purified.

## Formulation

PBS with 0.1% sodium azide and 50% glycerol pH 7.3.

## Storage

Store at -20°C. DO NOT ALIQUOT

## Clonality

Polyclonal

## Ig Type

Rabbit IgG

## Applications

ELISA, WB, IHC, IF, IP

## Dilutions

Recommended Dilution:

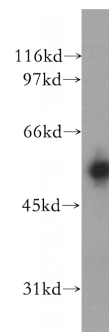
WB: 1:500-1:5000

IP: 1:200-1:2000

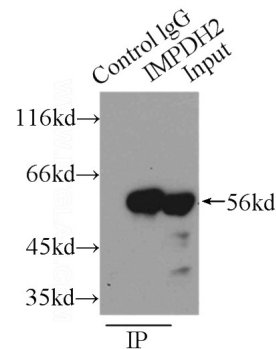
IHC: 1:20-1:200

IF: 1:10-1:100

## Validations



human heart tissue were subjected to SDS PAGE followed by western blot with Catalog No:111786(IMPDH2 antibody) at dilution of 1:400

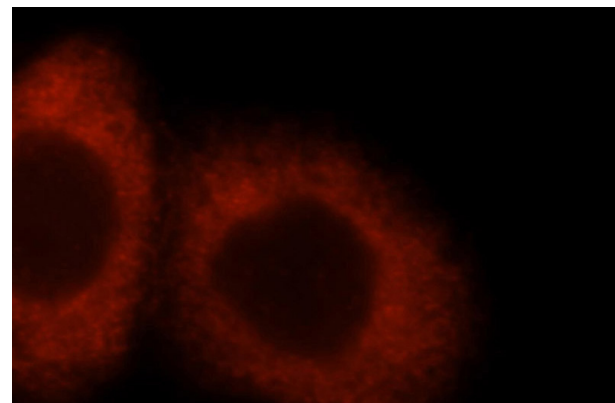
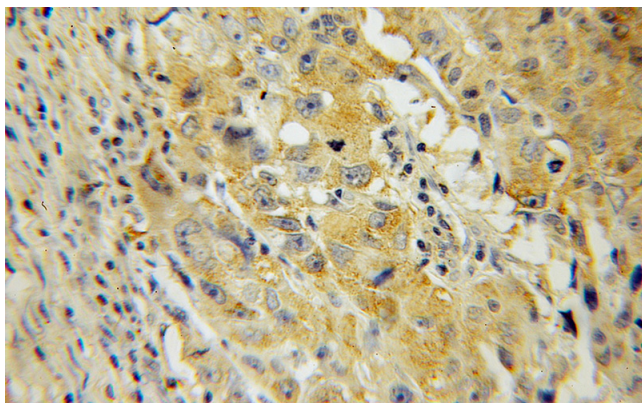


IP Result of anti-IMPDH2 (IP:Catalog No:111786, 3ug; Detection:Catalog No:111786 1:800) with K-562 cells lysate 4000ug.

# IMPDH2 antibody

Catalog Number: 111786

---



Immunohistochemical of paraffin-embedded human lung cancer using Catalog No:111786(IMPDH2 antibody) at dilution of 1:100 (under 10x lens)

Immunofluorescent analysis of HeLa cells, using IMPDH2 antibody Catalog No:111786 at 1:25 dilution and Rhodamine-labeled goat anti-rabbit IgG (red).