

Human G6PD (His tag) recombinant protein



Catalog Number: 519386

General Information

Gene Name Synonym

Glucose-6-Phosphate 1-Dehydrogenase, G6PD

Protein Construction

A DNA sequence encoding the Human G6PD Ala2-Leu515 is expressed with a 6His tag at the C-terminus.

Organism

Human

Expression Host

Human Cells

QC Testing

Purity

>95% as determined by SDS-PAGE.

Endotoxin

<1.0 EU per μg protein as determined by the LAL method.

Stability

Store for up to 6 months at -20°C

Formulation

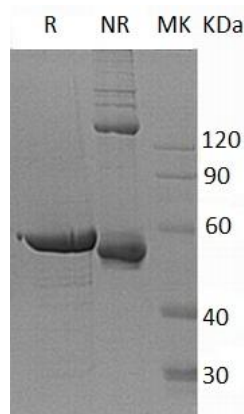
Supplied as a $0.2\ \mu\text{m}$ filtered solution of PBS, pH7.4.

Usage Guide

Storage

Store at $<-20^{\circ}\text{C}$, minimize freeze-thaw cycles.

SDS-PAGE



Human G6PD (His tag) recombinant protein