

SMCR7/MID49 antibody



Catalog Number: 115386

Product name

SMCR7/MID49 antibody

Specificity

Human, Mouse; other species not tested.

Antibody description

SMCR7/MID49 Rabbit Polyclonal antibody.
Positive WB detected in HT-1080 cells. Positive IHC detected in human liver cancer tissue, human skeletal muscle tissue. Observed molecular weight by Western-blot: 49 kDa

Preparation

This antibody was obtained by immunization of SMCR7/MID49 recombinant protein (Accession Number: NM_139162). Purification method: Antigen affinity purified.

Formulation

PBS with 0.1% sodium azide and 50% glycerol pH 7.3.

Storage

Store at -20°C. DO NOT ALIQUOT

Clonality

Polyclonal

Ig Type

Rabbit IgG

Applications

ELISA, IHC, WB

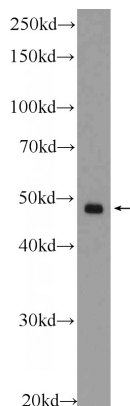
Dilutions

Recommended Dilution:

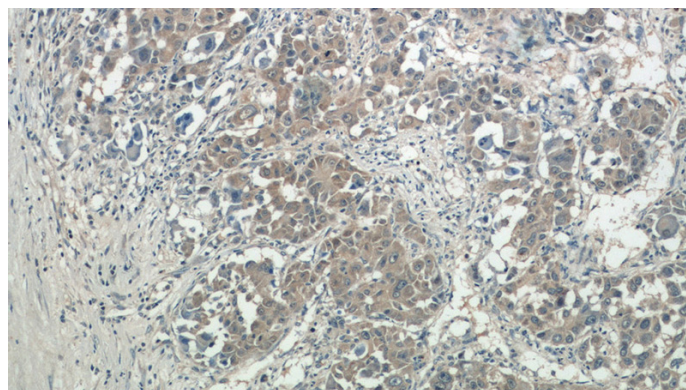
WB: 1:200-1:1000

IHC: 1:20-1:200

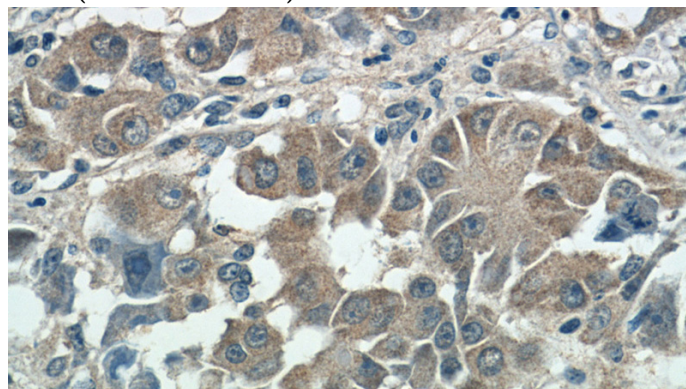
Validations



HT-1080 cells were subjected to SDS PAGE followed by western blot with Catalog No:115386(SMCR7,MID49 Antibody) at dilution of 1:300



Immunohistochemistry of paraffin-embedded human liver cancer tissue slide using Catalog No:115386(SMCR7,MID49 Antibody) at dilution of 1:50 (under 10x lens)



Immunohistochemistry of paraffin-embedded human liver cancer tissue slide using Catalog

SMCR7/MID49 antibody



Catalog Number: 115386

No:115386(SMCR7,MID49 Antibody) at dilution of 1:50 (under 40x lens)