

Anti-ISL2 antibody



Catalog Number: 141386

Product name

Anti-ISL2 antibody

Specificity

Human ISL2

Antibody description

Rabbit Polyclonal to Human ISL2

Preparation

Produced in rabbits immunized with a synthetic peptide corresponding to the center region of the Human ISL2, and purified by antigen affinity chromatography.

Formulation

0.2 µm filtered solution in PBS

Storage

This antibody can be stored at 2°C-8°C for one month without detectable loss of activity. Antibody products are stable for twelve months from date of receipt when stored at -20°C to -80°C.

Preservative-Free.

Sodium azide is recommended to avoid contamination (final concentration 0.05%-0.1%). It is toxic to cells and should be disposed of properly. Avoid repeated freeze-thaw cycles.

Clonality

Polyclonal

Ig Type

Rabbit IgG

Applications

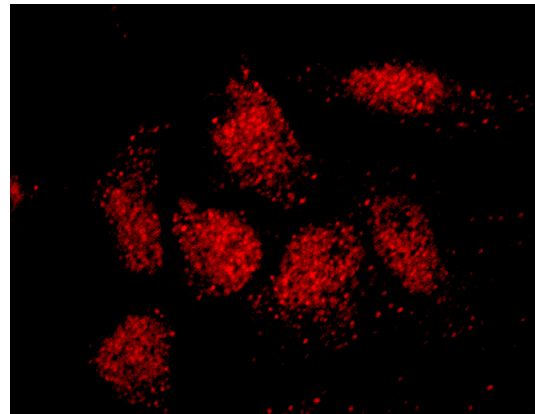
WB, ICC/IF, IF

Dilutions

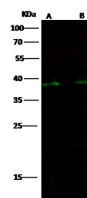
WB: 5-20 µg/ml

ICC/IF: 1-5 µg/mL

Validations



Human ISL2 / Islet 2 Immunofluorescence(IF)



Items	Lanes	A	B
Sample (whole cell lysate)		293T	HeLa
Sample Volume (µg/lane)		30	30
Gel	13% SDS-PAGE reducing gel		
Recommended Concentration		5-20 µg/ml	
Secondary Antibody		Dylight 800-labeled Antibody To Rabbit IgG (H+L), at 1:5000 dilution.	
		Developed using Odyssey imaging system.	
Explanation		Predicted band size : 40 kDa Observed band size : 38 kDa	

15194

Human ISL2 / Islet 2 Western blot (WB) 15193