

Human LC3A/MAP1LC3A (His Tag) recombinant protein



Catalog Number: 500386

General Information

Gene Name Synonym

Autophagy-related protein LC3 A; Autophagy-related ubiquitin-like modifier LC3 A; MAP1 light chain 3-like protein 1; MAP1A/MAP1B light chain 3 A; Microtubule-associated protein 1 light chain 3 alpha

Protein Construction

A DNA sequence encoding the mature form of human MAP1LC3A (Q9H492-1) (Met1-Phe121) was expressed with a polyhistidine tag at the C-terminus.

Organism

Human

Expression Host

E. coli

QC Testing

Purity

> 95 % as determined by SDS-PAGE

Endotoxin

Please contact us for more information.

Stability

Samples are stable for up to twelve months from date of receipt at -70°C

Predicted N terminal

Met

Molecular Mass

The recombinant human MAP1LC3A consists of 127 amino acids and predicts a molecular mass of 15.1 KDa. It migrates as an approximately 17 KDa band in SDS-PAGE under reducing conditions.

Formulation

Lyophilized from sterile PBS, 10% glycerol, pH 7.5
1. 5 % trehalose and mannitol are added as protectants before lyophilization.
2. Please contact us for any concerns or special requirements.

Usage Guide

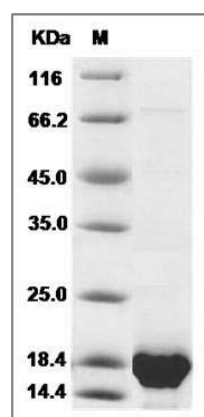
Storage

Store it under sterile conditions at -20°C to -80°C. It is recommended that the protein be aliquoted for optimal storage. Avoid repeated freeze-thaw cycles.

Reconstitution

Adding sterile water, prepare a stock solution of 0.25 mg/ml. Concentration is measured by UV-Vis.

SDS-PAGE



Human LC3A / MAP1LC3A Protein (His Tag) SDS-PAGE