

# Anti-IL-6 Rabbit antibody

Catalog Number: 166686

## Product name

Anti-IL-6 Rabbit antibody

## Specificity

Human

## Antibody description

IL-6 Rabbit polyclonal antibody

## Preparation

Antigen: The antiserum was produced against synthesized peptide derived from the Internal region of human IL6. AA range:131-180

## Formulation

Liquid in PBS containing 50% glycerol, 0.5% BSA and 0.02% sodium azide.

## Storage

Store at 4°C short term. Store at -20°C long term. Avoid freeze / thaw cycle.

## Clonality

Polyclonal

## Ig Type

Rabbit IgG

## Applications

WB, IHC-P, ELISA

## Dilutions

WB: 1/500 - 1/2000

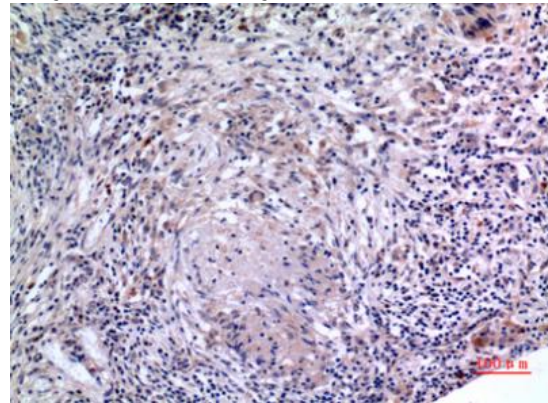
IHC-p: 1/100-1/300

ELISA: 1/20000

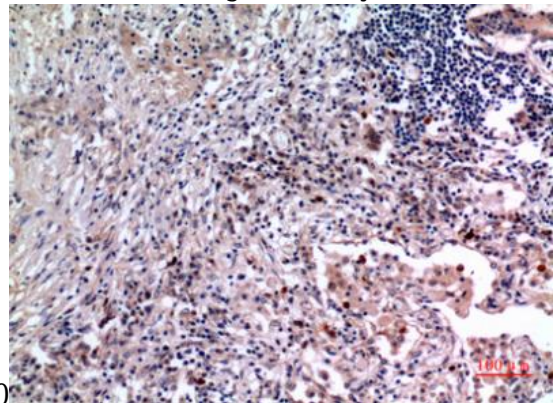
## Validations



Western Blot analysis of K562 cells using IL-6 Polyclonal Antibody.



Immunohistochemical analysis of paraffin-embedded human-lung, antibody was diluted at



1:100

Immunohistochemical analysis of paraffin-embedded human-lung, antibody was diluted at

# Anti-IL-6 Rabbit antibody



Catalog Number: 166686

---

Western blot detection of IL-6 in T47D, COS7 and HeLa cell lysates using IL-6 rabbit pAb (1:3000 diluted). Predicted band size: 23kDa. Observed band size: 23kDa.

