

# STAT2 antibody

Catalog Number: 115686

## Product name

STAT2 antibody

## Specificity

Human; other species not tested.

## Antibody description

STAT2 Rabbit Polyclonal antibody. Positive IHC detected in human breast cancer tissue, human lung cancer tissue. Positive WB detected in MCF7 cells. Observed molecular weight by Western-blot: 113kd

## Preparation

This antibody was obtained by immunization of Peptide (Accession Number: NM\_005419). Purification method: Antigen affinity purified.

## Formulation

PBS with 0.02% sodium azide and 50% glycerol pH 7.3.

## Storage

Store at -20°C. DO NOT ALIQUOT

## Clonality

Polyclonal

## Ig Type

Rabbit IgG

## Applications

ELISA, WB, IHC

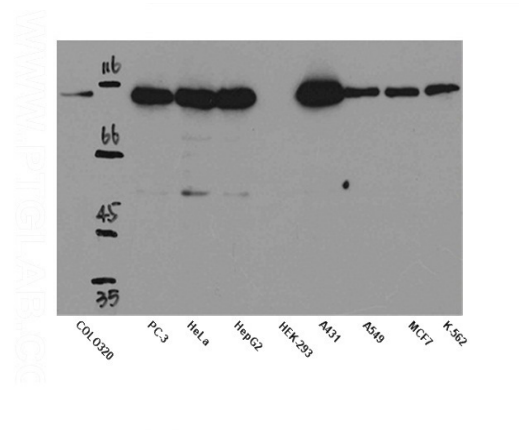
## Dilutions

Recommended Dilution:

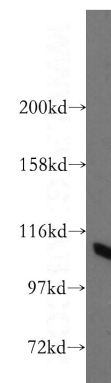
WB: 1:200-1:2000

IHC: 1:20-1:200

## Validations

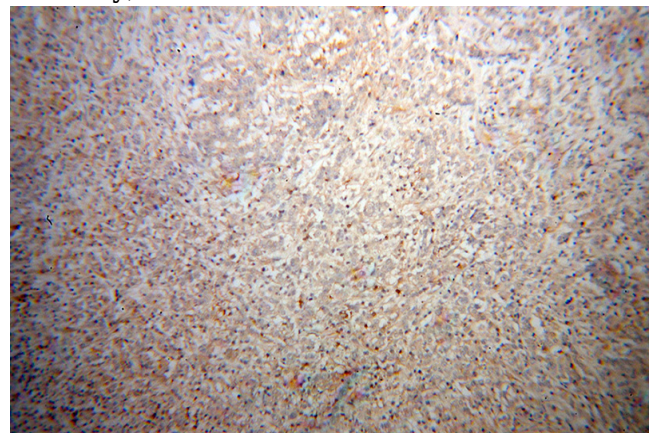


WB result of anti-STAT2 (Catalog No:115686) in



different cell lysates.

MCF7 cells were subjected to SDS PAGE followed by western blot with Catalog No:115686(STAT2 antibody) at dilution of 1:800

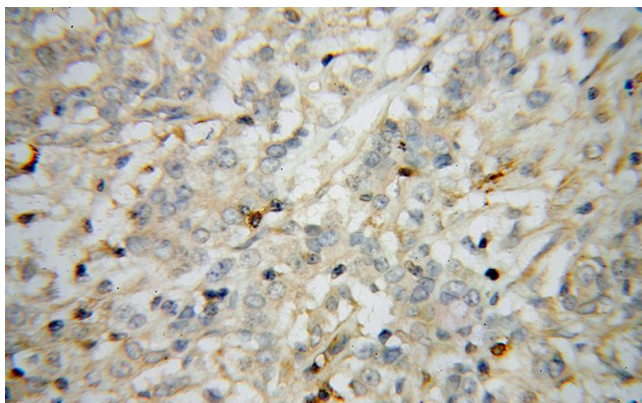


Immunohistochemical of paraffin-embedded human breast cancer using Catalog No:115686(STAT2 antibody) at dilution of 1:50 (under 10x lens)

# STAT2 antibody

Catalog Number: 115686

---



Immunohistochemical of paraffin-embedded human breast cancer using Catalog No:115686(STAT2 antibody) at dilution of 1:50 (under 40x lens)