

PCCA antibody

Catalog Number: 113686

Product name

PCCA antibody

IP: 1:500-1:5000

IHC: 1:20-1:200

Specificity

Human, Mouse; other species not tested.

Antibody description

PCCA Rabbit Polyclonal antibody. Positive IHC detected in human liver tissue. Positive IP detected in L02 cells. Positive WB detected in L02 cells, mouse liver tissue, NIH/3T3 cells. Observed molecular weight by Western-blot: 70 kDa

Preparation

This antibody was obtained by immunization of PCCA recombinant protein (Accession Number: BC000140). Purification method: Antigen affinity purified.

Formulation

PBS with 0.02% sodium azide and 50% glycerol pH 7.3.

Storage

Store at -20°C. DO NOT ALIQUOT

Clonality

Polyclonal

Ig Type

Rabbit IgG

Applications

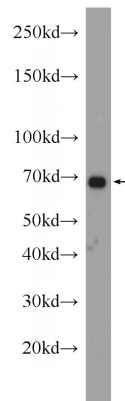
ELISA, WB, IHC, IP

Dilutions

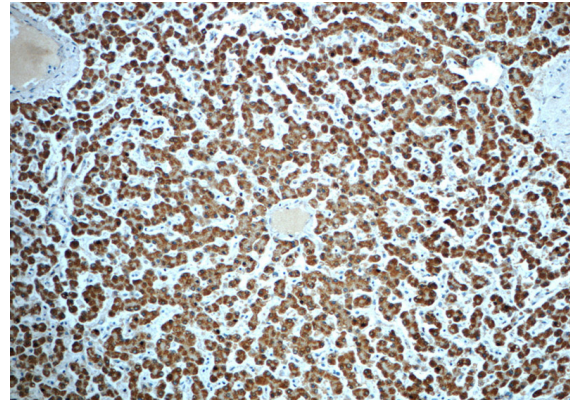
Recommended Dilution:

WB: 1:500-1:5000

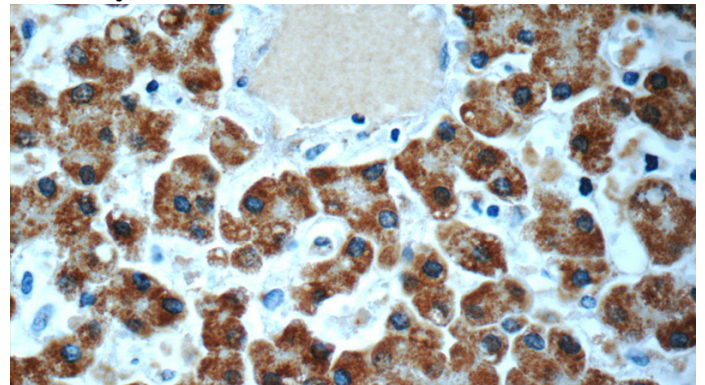
Validations



L02 cells were subjected to SDS PAGE followed by western blot with Catalog No:113686(PCCA antibody) at dilution of 1:1000



Immunohistochemistry of paraffin-embedded human liver slide using Catalog No:113686(PCCA Antibody) at dilution of 1:50

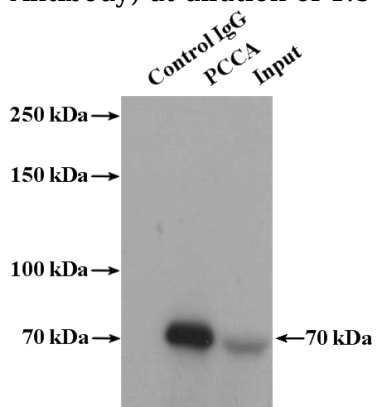


Immunohistochemistry of paraffin-embedded human liver slide using Catalog No:113686(PCCA

PCCA antibody

Catalog Number: 113686

Antibody) at dilution of 1:50



IP Result of anti-PCCA (IP:Catalog No:113686, 4ug; Detection:Catalog No:113686 1:1000) with L02 cells lysate 1800ug.