

MLX antibody



Catalog Number: 112686

Product name

MLX antibody

Specificity

human, mouse, rat; other species not tested.

Antibody description

MLX Rabbit Polyclonal antibody. Positive WB detected in mouse thymus tissue, mouse ovary tissue. Positive IHC detected in human prostate cancer. Observed molecular weight by Western-blot: 33kd

Preparation

This antibody was obtained by immunization of MLX recombinant protein (Accession Number: NM_013383). Purification method: Antigen affinity purified.

Formulation

PBS with 0.02% sodium azide and 50% glycerol pH 7.3.

Storage

Store at -20°C. DO NOT ALIQUOT

Clonality

Polyclonal

Ig Type

Rabbit IgG

Applications

ELISA, WB, IHC

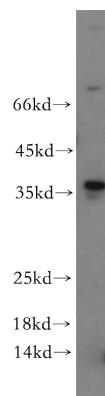
Dilutions

Recommended Dilution:

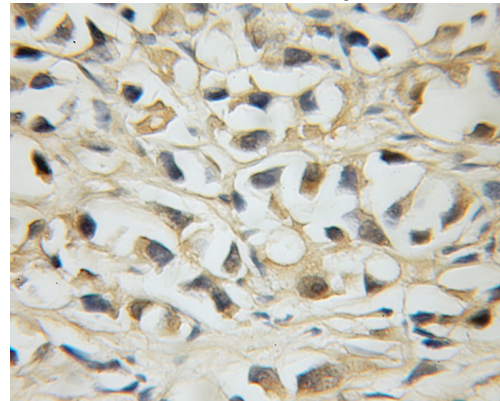
WB: 1:200-1:2000

IHC: 1:20-1:200

Validations



mouse thymus tissue were subjected to SDS PAGE followed by western blot with Catalog No:112686(MLX antibody) at dilution of 1:200



Immunohistochemical of paraffin-embedded human prostate cancer using Catalog No:112686(MLX antibody) at dilution of 1:50 (under 10x lens)