

# ATF6 antibody

Catalog Number: 108286

## Product name

ATF6 antibody

WB: 1:1000-1:10000

IP: 1:500-1:5000

## Specificity

Human, Rat, Mouse; other species not tested.

IHC: 1:20-1:200

IF: 1:10-1:100

## Antibody description

ATF6 Rabbit Polyclonal antibody. Positive IP detected in HeLa cells. Positive WB detected in MCF-7 cells, HeLa cells, mouse liver tissue. Positive IF detected in HeLa cells. Positive IHC detected in human cervical cancer tissue, human pancreas tissue. Observed molecular weight by Western-blot: 90 kDa

## Preparation

This antibody was obtained by immunization of ATF6 recombinant protein (Accession Number: BC014969). Purification method: Antigen Affinity purified.

## Formulation

PBS with 0.02% sodium azide and 50% glycerol pH 7.3.

## Storage

Store at -20°C. DO NOT ALIQUOT

## Clonality

Polyclonal

## Ig Type

Rabbit IgG

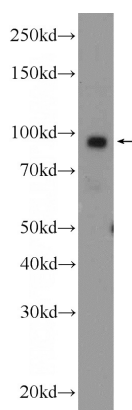
## Applications

ELISA, WB, IF, IHC, IP

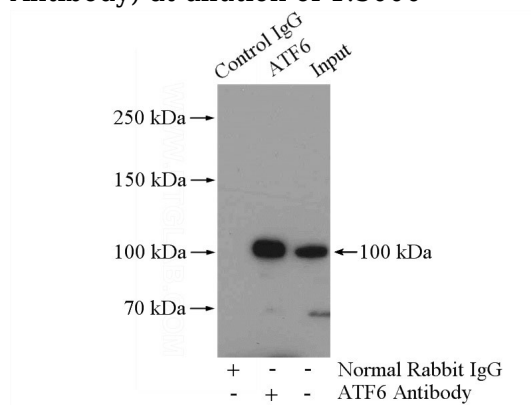
## Dilutions

Recommended Dilution:

## Validations



MCF-7 cells were subjected to SDS PAGE followed by western blot with Catalog No:108286(ATF6 Antibody) at dilution of 1:3000

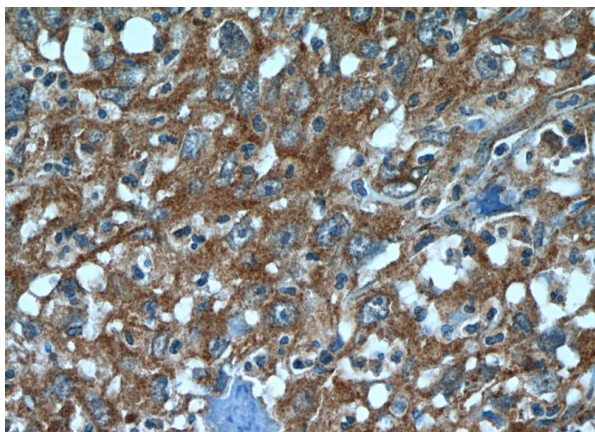


IP Result of anti-ATF6 (IP:Catalog No:108286, 4ug; Detection:Catalog No:108286 1:1500) with HeLa cells lysate 2800ug.

# ATF6 antibody

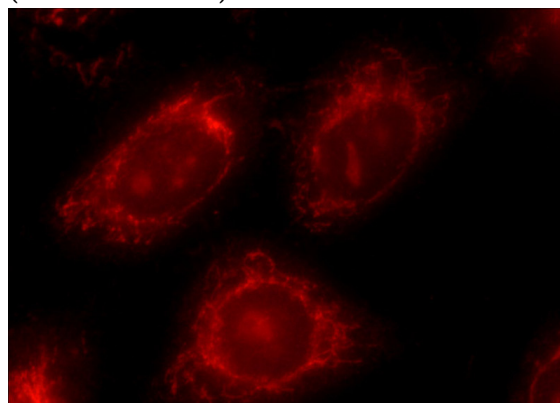
Catalog Number: 108286

---



Immunohistochemistry of paraffin-embedded human cervical cancer tissue slide using Catalog No:108286(ATF6 Antibody) at dilution of 1:50

(under 40x lens)



Immunofluorescent analysis of HeLa cells using Catalog No:108286(ATF6 Antibody) at dilution of 1:25 and Rhodamine-Goat anti-Rabbit IgG