

Anti-MBD4 antibody



Catalog Number: 106286

Product name

Anti-MBD4 antibody

Specificity

Human MBD4

Antibody description

Rabbit polyclonal to MBD4

Preparation

Produced in rabbits immunized with a synthetic peptide corresponding to the center region of the Human MBD4, and purified by antigen affinity chromatography.

Formulation

0.2 µm filtered solution in PBS

Storage

This antibody can be stored at 2°C-8°C for one month without detectable loss of activity. Antibody products are stable for twelve months from date of receipt when stored at -20°C to -80°C.

Preservative-Free.

Sodium azide is recommended to avoid contamination (final concentration 0.05%-0.1%). It is toxic to cells and should be disposed of properly. Avoid repeated freeze-thaw cycles.

Clonality

Polyclonal

Ig Type

Rabbit IgG

Applications

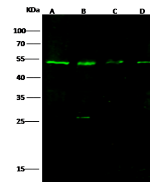
WB, IP

Dilutions

WB: 10-20 µg/ml

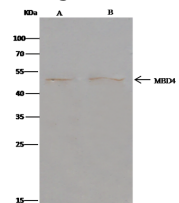
IP: 0.5-2 uL/mg of lysate

Validations



Lanes	A	B	C	D
Items				
Sample (whole cell lysate)	HeLa	MCF7	K562	A549
Sample Volume (µg/lane)	30	30	30	30
Gel	13% SDS PAGE reducing gel			
Recommended Concentration	10-20µg/ml			
Secondary Antibody	DyLight 800 Labeled Antibody to Rabbit IgG (H+L), at 1:5000 dilution.			
Explanation	Developed using Odyssey imaging system. Predicted band size: 66 kDa Observed band size: 53 kDa Additional bands at: 25 kDa (We are unsure as to the identity of these extra bands. They are possible non-specific binding).			

MBD4 Antibody, Rabbit PAb, Antigen Affinity



Lanes	A	B
Items		
Sample (whole cell lysate)	HeLa	MCF7
Sample quantity	0.5 mg	
IP antibody quantity	2 µg	
Immunoaffinity beads	60 µg	
Protein G		
Gel	13% SDS-PAGE reducing gel	
Primary antibody	KLH-SMCC-SINOA762 antibody at 10 µg/ml	
Secondary antibody	Clean-Block IP Detection Reagent (HRP) at 1:500 dilution	

Purified, Western blot

MBD4 Antibody, Rabbit PAb, Antigen Affinity

Purified, Immunoprecipitation