

PRX5 antibody

Catalog Number: 114286

Product name

PRX5 antibody

IHC: 1:20-1:200

IF: 1:10-1:100

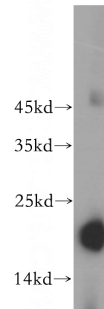
Specificity

Human, Mouse, Rat; other species not tested.

Antibody description

PRX5 Rabbit Polyclonal antibody. Positive WB detected in mouse kidney tissue, human liver tissue, mouse liver tissue. Positive IHC detected in human kidney tissue. Positive IF detected in HepG2 cells. Observed molecular weight by Western-blot: 17kd

Validations



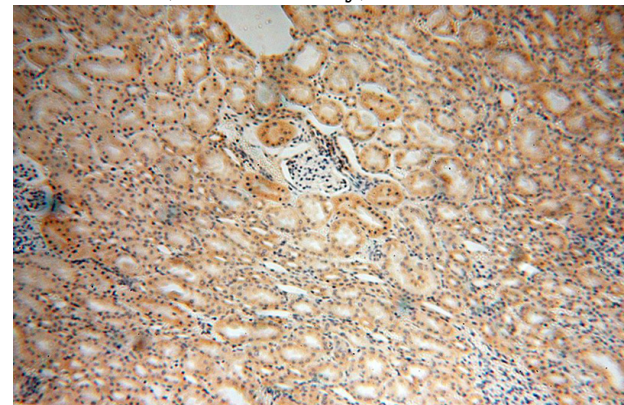
Preparation

This antibody was obtained by immunization of PRX5 recombinant protein (Accession Number: NM_012094). Purification method: Antigen affinity purified.

mouse kidney tissue were subjected to SDS PAGE followed by western blot with Catalog No:114286(Prx5 antibody) at dilution of 1:600

Formulation

PBS with 0.02% sodium azide and 50% glycerol pH 7.3.



Storage

Store at -20°C. DO NOT ALIQUOT

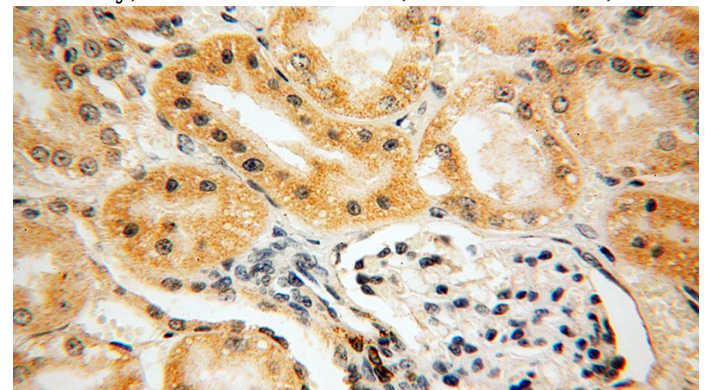
Clonality

Polyclonal

Immunohistochemical of paraffin-embedded human kidney using Catalog No:114286(Prx5 antibody) at dilution of 1:50 (under 10x lens)

Ig Type

Rabbit IgG



Applications

ELISA, WB, IHC, IF

Dilutions

Recommended Dilution:

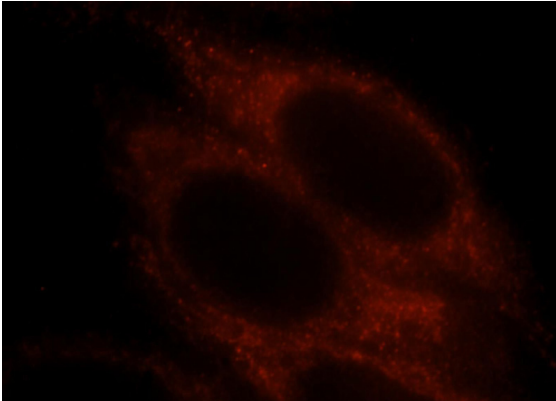
WB: 1:500-1:5000

Immunohistochemical of paraffin-embedded human kidney using Catalog No:114286(Prx5

PRX5 antibody

Catalog Number: 114286

antibody) at dilution of 1:50 (under 40x lens)



Immunofluorescent analysis of HepG2 cells, using PRDX5 antibody Catalog No:114286 at 1:25 dilution and Rhodamine-labeled goat anti-rabbit IgG (red).