

PNRC2 antibody



Catalog Number: 113986

Product name

PNRC2 antibody

IP: 1:200-1:1000

IHC: 1:20-1:200

Specificity

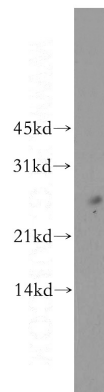
Human, Mouse; other species not tested.

IF: 1:20-1:200

Antibody description

PNRC2 Rabbit Polyclonal antibody. Positive IP detected in mouse lung tissue. Positive WB detected in mouse lung tissue. Positive IHC detected in human gliomas tissue. Positive IF detected in MCF-7 cells. Observed molecular weight by Western-blot: 25kd

Validations



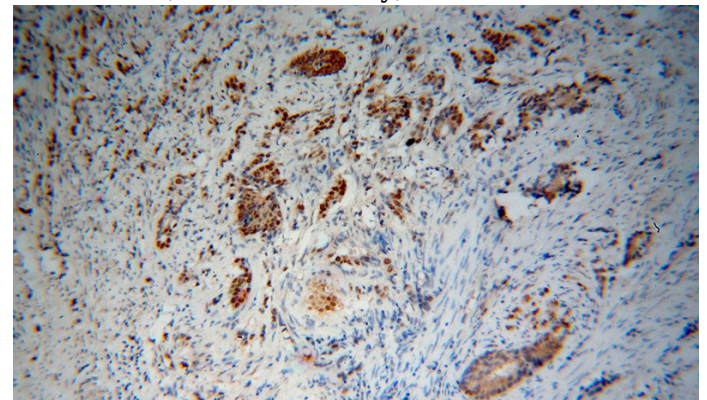
Preparation

This antibody was obtained by immunization of PNRC2 recombinant protein (Accession Number: NM_017761). Purification method: Antigen affinity purified.

mouse lung tissue were subjected to SDS PAGE followed by western blot with Catalog No:113986(PNRC2 antibody) at dilution of 1:500

Formulation

PBS with 0.1% sodium azide and 50% glycerol pH 7.3.



Storage

Store at -20°C. DO NOT ALIQUOT

Clonality

Polyclonal

Ig Type

Rabbit IgG

Applications

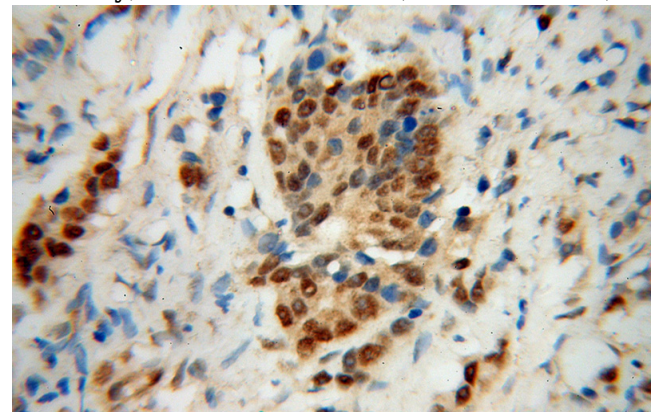
ELISA, WB, IHC, IF, IP

Dilutions

Recommended Dilution:

WB: 1:200-1:2000

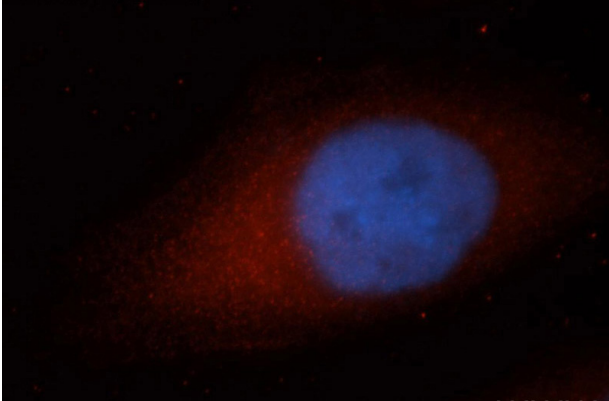
Immunohistochemical of paraffin-embedded human gliomas using Catalog No:113986(PNRC2 antibody) at dilution of 1:50 (under 10x lens)



PNRC2 antibody

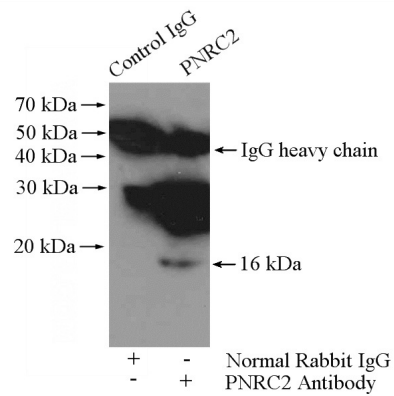
Catalog Number: 113986

Immunohistochemical of paraffin-embedded human gliomas using Catalog No:113986(PNRC2 antibody) at dilution of 1:50 (under 40x lens)



Immunofluorescent analysis of MCF-7 cells, using PNRC2 antibody Catalog No: at 1:50 dilution and

Rhodamine-labeled goat anti-rabbit IgG (red). Blue pseudocolor = DAPI (fluorescent DNA dye).



IP Result of anti-PNRC2 (IP:Catalog No:113986, 4ug; Detection:Catalog No:113986 1:300) with mouse lung tissue lysate 4000ug.