

General Information

Gene Name Synonym

Env polyprotein; Surface protein gp120;
Glycoprotein 120; Transmembrane protein gp41;
Glycoprotein 32

Protein Construction

A DNA sequence encoding the SIV envelope glycoprotein gp160 (CAA32487.1) extracellular domain (Gln24-Arg531), termed as gp120, was expressed with a polyhistidine tag at the C-terminus.

Organism

SIV

Expression Host

Human Cells

QC Testing

Purity

> 85 % as determined by SDS-PAGE.

Endotoxin

<1.0 EU per μg protein as determined by the LAL method.

Stability

Samples are stable for up to twelve months from date of receipt at -70°C

Predicted N terminal

Gln 24

Molecular Mass

The recombinant SIV envelope glycoprotein gp120 consists 519 amino acids and predicts a molecular mass of 59.8 kDa.

Formulation

Lyophilized from sterile PBS, pH 7.4.

1. 5 % trehalose and mannitol are added as protectants before lyophilization.

2. Please contact us for any concerns or special requirements.

Usage Guide

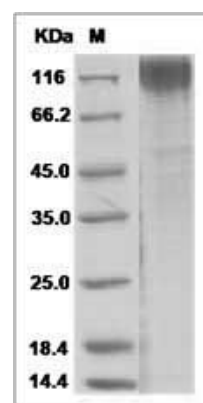
Storage

Store it under sterile conditions at -20°C to -80°C . It is recommended that the protein be aliquoted for optimal storage. Avoid repeated freeze-thaw cycles.

Reconstitution

Adding sterile water, prepare a stock solution of 0.25 mg/ml. Concentration is measured by UV-Vis.

SDS-PAGE



Simian immunodeficiency virus (SIV) envelope glycoprotein gp160 Protein (His Tag)