

Human Complement Factor H (His Tag) recombinant protein



Catalog Number: 502186

General Information

Protein Construction

A DNA sequence encoding the C-terminal segment of CFH isoform a (NP_000177.2), corresponding to amino acid (Ser 860-Arg 1231) was expressed, fused with a polyhistidine tag at the C-terminus and a signal peptide at the N-terminus.

Organism

Human

Expression Host

Human Cells

QC Testing

Activity

Measured by its ability to bind biotinylated human DMP1 in a functional ELISA.

Purity

> 97 % as determined by SDS-PAGE

Endotoxin

< 1.0 EU per μg of the protein as determined by the LAL method

Stability

Samples are stable for up to twelve months from date of receipt at -70°C

Predicted N terminal

Ser 860

Molecular Mass

The recombinant human CFH consists of 383 amino acids and has a calculated molecular mass of 43 kDa. The apparent molecular mass of rh CFH is approximately 55-60 kDa in SDS-PAGE under reducing conditions due to glycosylation.

Formulation

Lyophilized from sterile PBS, pH 7.4

1. 5 % trehalose and mannitol are added as protectants before lyophilization.
2. Please contact us for any concerns or special requirements.

Usage Guide

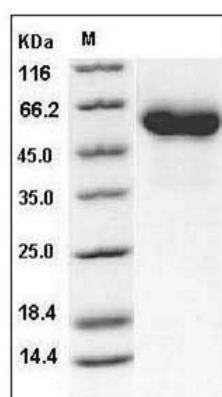
Storage

Store it under sterile conditions at -20°C to -80°C . It is recommended that the protein be aliquoted for optimal storage. Avoid repeated freeze-thaw cycles.

Reconstitution

Adding sterile water, prepare a stock solution of 0.25 mg/ml. Concentration is measured by UV-Vis.

SDS-PAGE



Human Complement Factor H / CFH Protein (His Tag) SDS-PAGE