

# ALX1 antibody



Catalog Number: 107886

## Product name

ALX1 antibody

## Specificity

Human, Mouse; other species not tested.

## Antibody description

ALX1 Rabbit Polyclonal antibody. Positive WB detected in mouse embryo tissue, ROS1728 cells. Observed molecular weight by Western-blot: 35-37 kDa

## Preparation

This antibody was obtained by immunization of ALX1 recombinant protein (Accession Number: NM\_006982). Purification method: Antigen affinity purified.

## Formulation

PBS with 0.1% sodium azide and 50% glycerol pH 7.3.

## Storage

Store at -20°C. DO NOT ALIQUOT

## Clonality

Polyclonal

## Ig Type

Rabbit IgG

## Applications

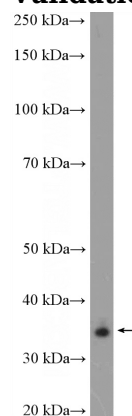
ELISA, WB

## Dilutions

Recommended Dilution:

WB: 1:200-1:2000

## Validations



mouse embryo tissue were subjected to SDS PAGE followed by western blot with Catalog No:107886(ALX1 Antibody) at dilution of 1:600