

Anti-Cyclin E1 Rabbit antibody



Catalog Number: 166886

Product name

Rabbit IgG

Anti-Cyclin E1 Rabbit antibody

Applications

Specificity

WB, IHC-P, ICC/IF, ELISA

Human, Mouse, Rat

Dilutions

Antibody description

WB: 1/500 - 1/2000

Cyclin E1 Rabbit polyclonal antibody

IHC: 1/100 - 1/300

Preparation

IF: 1/200 - 1/1000

Antigen: The antiserum was produced against synthesized peptide derived from human Cyclin E1. AA range:91-140

ELISA: 1/20000

Formulation

Validations

Liquid in PBS containing 50% glycerol, 0.5% BSA and 0.02% sodium azide.

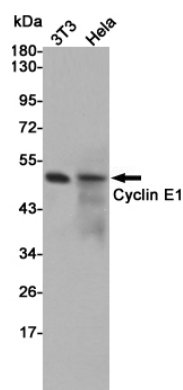
Storage

Store at 4°C short term. Store at -20°C long term. Avoid freeze / thaw cycle.

Clonality

Polyclonal

Ig Type



Western blot detection of Cyclin E1 in 3T3 and HeLa cell lysates using Cyclin E1 rabbit pAb (1:500 diluted). Predicted band size:49kDa. Observed band size:49kDa.