

PICK1 antibody

Catalog Number: 113886

Product name

PICK1 antibody

WB: 1:200-1:2000

IP: 1:200-1:2000

Specificity

Human, Mouse, Rat; other species not tested.

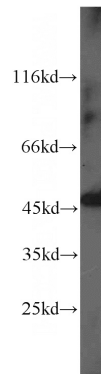
IHC: 1:20-1:200

IF: 1:20-1:200

Antibody description

PICK1 Rabbit Polyclonal antibody. Positive IF detected in HEK-293 cells. Positive IHC detected in human prostate cancer tissue, human breast cancer tissue. Positive WB detected in mouse brain tissue, human brain tissue. Positive IP detected in mouse brain tissue. Observed molecular weight by Western-blot: 50-55 kDa

Validations



Preparation

This antibody was obtained by immunization of PICK1 recombinant protein (Accession Number: NM_001039584). Purification method: Antigen affinity purified.

mouse brain tissue were subjected to SDS PAGE followed by western blot with Catalog No:113886(PICK1 antibody) at dilution of 1:500

Formulation

PBS with 0.1% sodium azide and 50% glycerol pH 7.3.

Storage

Store at -20°C. DO NOT ALIQUOT

Clonality

Polyclonal

Ig Type

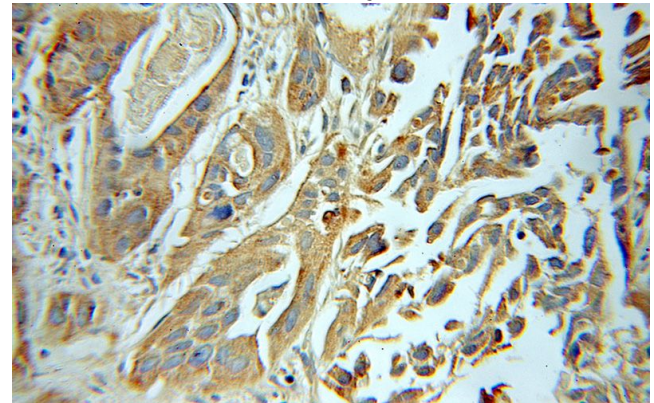
Rabbit IgG

Applications

ELISA, IHC, WB, IP, IF

Dilutions

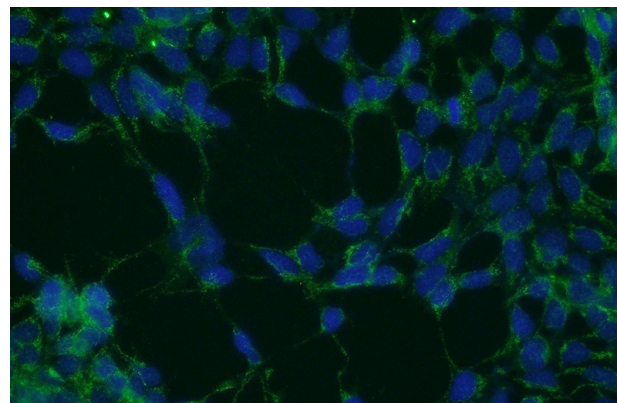
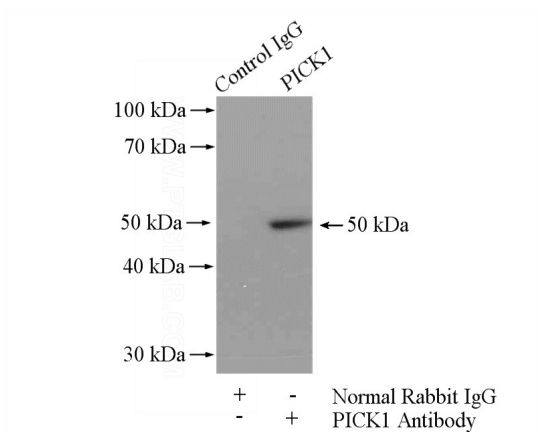
Recommended Dilution:



Immunohistochemical of paraffin-embedded human prostate cancer using Catalog No:113886(PICK1 antibody) at dilution of 1:50 (under 25x lens)

PICK1 antibody

Catalog Number: 113886



Immunofluorescent analysis of HEK-293 cells using Catalog No:113886(PICK1 Antibody) at dilution of 1:50 and Alexa Fluor 488-conjugated AffiniPure Goat Anti-Rabbit IgG(H+L)

IP Result of anti-PICK1 (IP:Catalog No:113886, 4ug; Detection:Catalog No:113886 1:500) with mouse brain tissue lysate 4400ug.