

Beta-2-Microglobulin Polyclonal antibody



Catalog Number: 108486

Product name

Beta-2-Microglobulin Polyclonal antibody

Specificity

Human, Mouse; other species not tested.

Antibody description

Beta-2-microglobulin Rabbit Polyclonal antibody. Positive IHC detected in human oesophagus cancer tissue, human stomach cancer tissue. Positive IF detected in A431 cells. Positive FC detected in HeLa cells. Positive WB detected in HeLa cells, A431 cells, human heart tissue, human stomach tissue, mouse lung tissue, Raji cells. Observed molecular weight by Western-blot: 12 kDa

Preparation

This antibody was obtained by immunization of Beta-2-microglobulin recombinant protein (Accession Number: NM_004048). Purification method: Antigen affinity purified.

Formulation

PBS with 0.02% sodium azide and 50% glycerol pH 7.3.

Storage

Store at -20°C. DO NOT ALIQUOT

Clonality

Polyclonal

Ig Type

Rabbit IgG

Applications

ELISA, WB, FC, IHC, IF

Dilutions

Recommended Dilution:

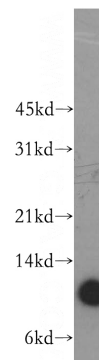
WB : 1:1000-1:8000

IP : 0.5-4.0 ug for 1.0-3.0 mg of total protein lysate

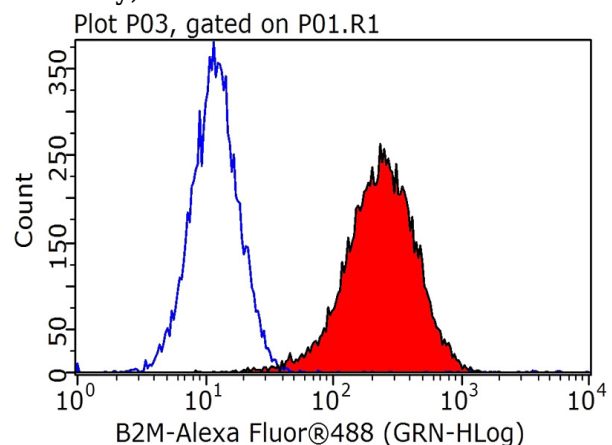
IHC : 1:2000-1:8000

IF/ICC : 1:375-1:1500

Validations



HeLa cells were subjected to SDS PAGE followed by western blot with Catalog No:117131(B2M antibody) at dilution of 1:1000

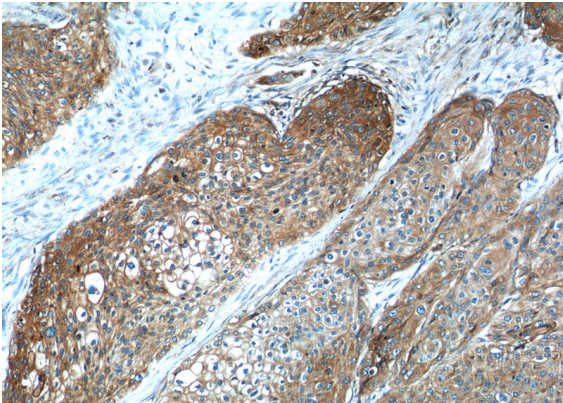


1X10⁶ HeLa cells were stained with 0.2ug B2M antibody (Catalog No:117131, red) and control antibody (blue). Fixed with 4% PFA blocked with 3% BSA (30 min). Alexa Fluor 488-conjugated AffiniPure Goat Anti-Rabbit IgG(H+L) with dilution 1:1000.

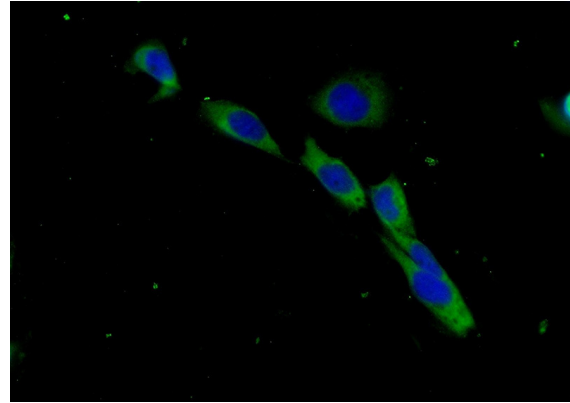
Beta-2-Microglobulin Polyclonal antibody



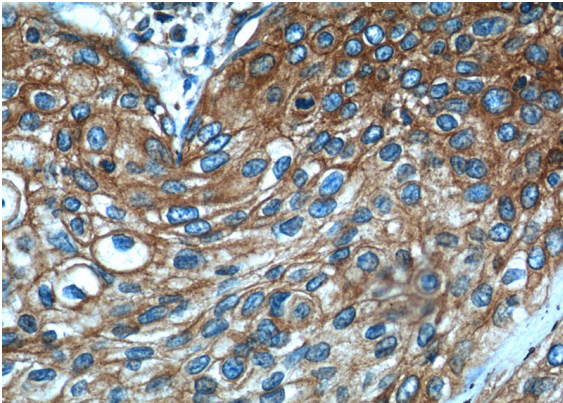
Catalog Number: 108486



Immunohistochemistry of paraffin-embedded human oesophagus cancer tissue slide using Catalog No:117131(B2M Antibody) at dilution of 1:50 (under 40x lens)



Immunohistochemistry of paraffin-embedded human oesophagus cancer tissue slide using Catalog No:117131(B2M Antibody) at dilution of 1:50 (under 10x lens)



Immunofluorescent analysis of (-20oc Ethanol) fixed A431 cells using Catalog No:117131(B2M Antibody) at dilution of 1:25 and Alexa Fluor 488-conjugated AffiniPure Goat Anti-Rabbit IgG(H+L)