

Anti-Phospho-Tau (Ser404) Rabbit antibody



Catalog Number: 167486

Product name

Anti-Phospho-Tau (Ser404) Rabbit antibody

Ig Type

Rabbit IgG

Specificity

Human, Mouse, Rat

Applications

WB, ICC/IF

Antibody description

Phospho-Tau (Ser404) Rabbit polyclonal antibody

Dilutions

WB: 1/1000

Preparation

Antigen: A synthetic phosphopeptide corresponding to residues surrounding Ser404 of human Tau

ICC/IF: 1/20

Validations

Formulation

Supplied in 50nM Tris-Glycine(pH 7.4), 0.15M NaCl, 40%Glycerol, 0.01% sodium azide and 0.05% BSA.

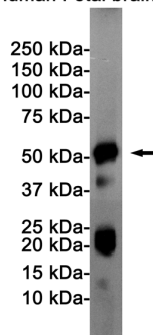
Storage

Store at -20°C. Stable for 12 months from date of receipt.

Clonality

Polyclonal

Human Fetal brain



Western blot detection of Tau (Phospho-Ser404) in Human Fetal brain cell lysates using Tau (Phospho-Ser404) Rabbit pAb(1:1000 diluted). Predicted band size: 79KDa. Observed band size: 50-80KDa.