

SLC6A15 Polyclonal Antibody



Catalog Number: 160486

Product name

Rabbit IgG

SLC6A15 Polyclonal Antibody

Applications

Specificity

WB

Mouse

Dilutions

Antibody description

WB 1:500 - 1:2000

Polyclonal antibody to SLC6A15

Preparation

Antigen: Recombinant fusion protein containing a sequence corresponding to amino acids 350-450 of human SLC6A15 (NP_877499.1).

Formulation

PBS with 0.02% sodium azide, 50% glycerol, pH7.3.

Storage

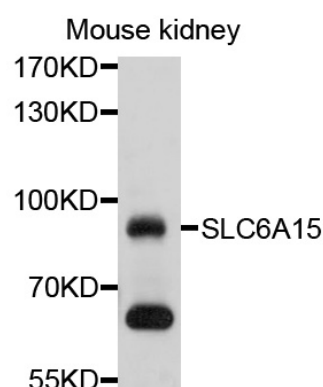
Store at -20°C. Avoid freeze / thaw cycles.

Clonality

Polyclonal

Ig Type

Validations



Western blot - SLC6A15 Polyclonal Antibody

Western blot analysis of extracts of mouse kidney, using SLC6A15 antibody at 1:1000 dilution. Secondary antibody: HRP Goat Anti-Rabbit IgG (H+L) at 1:10000 dilution. Lysates/proteins: 25ug per lane. Blocking buffer: 3% nonfat dry milk in TBST. Detection: ECL Basic Kit. Exposure time: 30s.