

# Anti-CLEC7A antibody



Catalog Number: 106086

## Product name

Anti-CLEC7A antibody

## Immunogen

[Mouse Dectin-1/CLEC7A \(His Tag\) recombinant protein](#)

## Specificity

Mouse Dectin-1 / CLEC7A

## Antibody description

Rabbit Monoclonal to Mouse CLEC7A

## Preparation

This antibody was obtained from a rabbit immunized with purified, recombinant Mouse Dectin-1 / CLEC7A (rM Dectin-1 / CLEC7A; NP\_064392.2; Phe69-Leu244) and conjugated with PE under optimum conditions, the unreacted PE was removed.

## Formulation

Aqueous solution containing 0.5% BSA and 0.09% sodium azide

## Storage

This antibody is stable for 12 months from date of receipt when stored at 2°C-8°C. Protected from prolonged exposure to light. Do not freeze ! Sodium azide is toxic to cells and should be

disposed of properly. Flush with large volumes of water during disposal.

## Clonality

Monoclonal

## Ig Type

Rabbit IgG

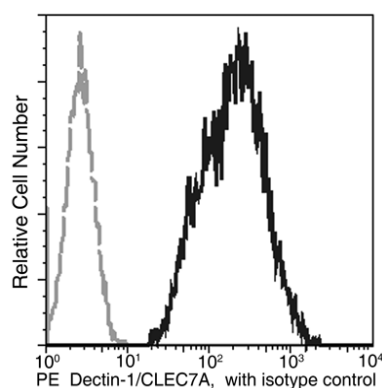
## Applications

FCM

## Dilutions

FCM

## Validations



Dectin-1 / CLEC7A Antibody (PE), Rabbit MAb, Flow cytometric

Profile of anti-Dectin/CLEC7A reactivity on Raw264.7 cells analyzed by flow cytometry.