

## General Information

### Gene Name Synonym

Lymphotoxin beta receptor (TNFR superfamily, member 3); Protein Ltbr

### Protein Construction

A DNA sequence encoding the rat LTBR (Q5U2S8) (Met1-Ala218) was expressed with the Fc region of human IgG1 at the C-terminus.

### Organism

Rat

### Expression Host

Human Cells

## QC Testing

### Purity

(9.8+79.7) % as determined by SDS-PAGE

### Endotoxin

< 1.0 EU per  $\mu\text{g}$  of the protein as determined by the LAL method

### Stability

Samples are stable for up to twelve months from date of receipt at  $-70^{\circ}\text{C}$

### Predicted N terminal

Ser 28

### Molecular Mass

The recombinant rat LTBR/Fc is a disulfide-linked homodimer. The reduced monomer comprises 432 amino acids and has a predicted molecular mass of 48.5 kDa. The apparent molecular mass of the protein is approximately 66 kDa in SDS-PAGE under reducing conditions.

### Formulation

Lyophilized from sterile PBS, pH 7.4.

1. 5 % trehalose and mannitol are added as protectants before lyophilization.

2. Please contact us for any concerns or special requirements.

## Usage Guide

### Storage

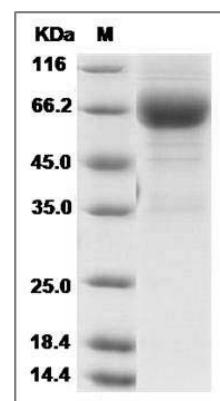
Store it under sterile conditions at  $-20^{\circ}\text{C}$  to  $-80^{\circ}\text{C}$ .

It is recommended that the protein be aliquoted for optimal storage. Avoid repeated freeze-thaw cycles.

### Reconstitution

Adding sterile water, prepare a stock solution of 0.25 mg/ml. Concentration is measured by UV-Vis.

### SDS-PAGE



Rat LTBR / TNFRSF3 Protein (Fc Tag) SDS-PAGE