

Anti-Paxillin Rabbit antibody



Catalog Number: 168776

Product name

Anti-Paxillin Rabbit antibody

Specificity

Human, Mouse, Rat

Antibody description

Paxillin Rabbit monoclonal antibody

Preparation

Antigen: A synthetic peptide of human Paxillin

Formulation

50nM Tris-Glycine(pH 7.4), 0.15M NaCl, 40%Glycerol, 0.01% sodium azide and 0.05% BSA.

Storage

Store at 4°C short term. Store at -20°C long term. Avoid freeze / thaw cycle.

Clonality

Monoclonal

Ig Type

Rabbit IgG

Applications

WB, IHC-P, ICC/IF, IP

Dilutions

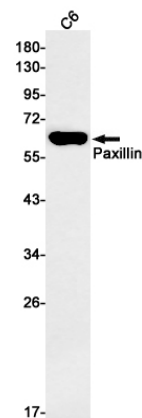
WB: 1/1000-1/5000

IHC: 1/20-1/100

ICC/IF: 1/50

IP: 1/20

Validations



Western blot detection of Paxillin in C6 cell lysates using Paxillin Rabbit mAb(1:1000 diluted).Predicted band size:65kDa.Observed band size:65kDa.